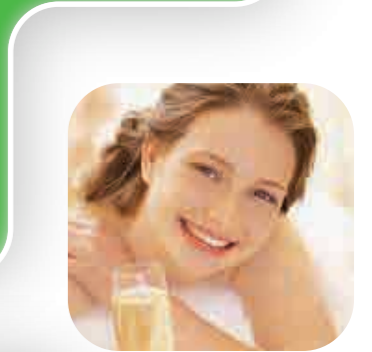




- STAINLESS STEEL
- LOGISTICS



HYGIENIC FLUID CONTROL VALVE, FITTING, EQUIPMENT



PHU GIANG NAM TRADING JOINT STOCK COMPANY

Head office: No. 626, Group 17, Tan Phu 1 Quarter, Tan Dong Hiep Ward, Ho Chi Minh City

Branch: No. 56 Alley 44 Group 7 Tu Dinh Street, Long Bien Ward, Ha Noi City

Tax code: 3703106534

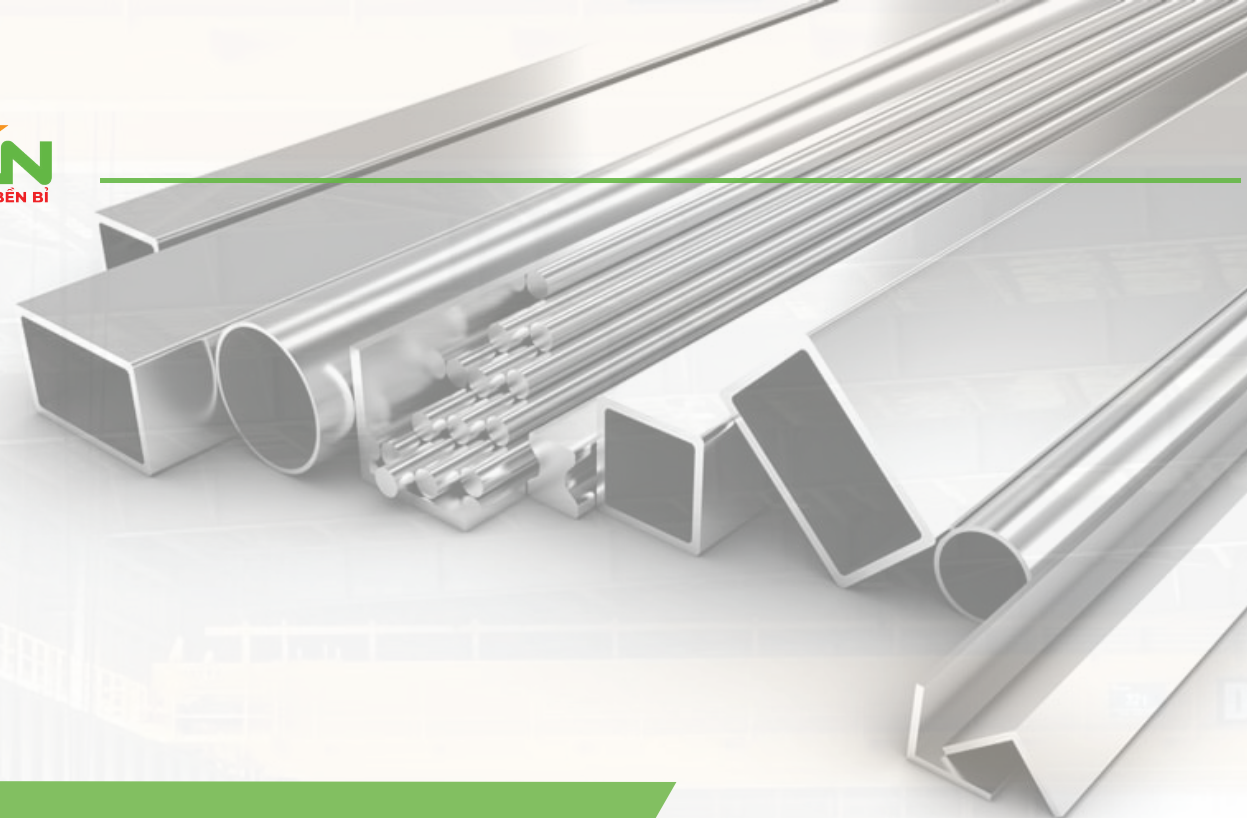
Email: info@phugiangnam.com

Hotline: 0933196837-0979165316-0274 221 6789

Website: phugiangnam.com - inoxphugiangnam.com.vn

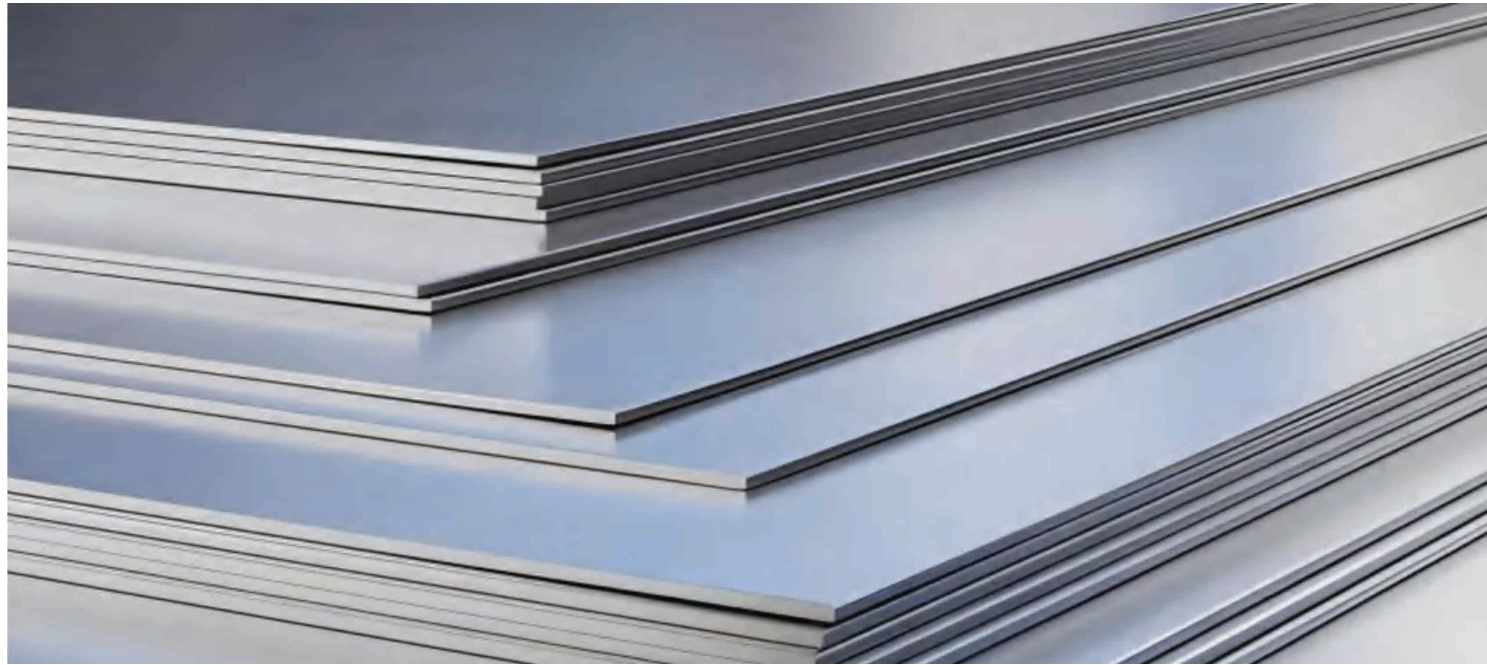


BPE-122

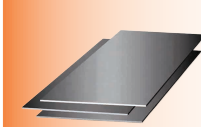


ABOUT US

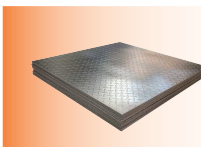
With many years of experience in the field of importing and distributing stainless steel (inox) in Viet Nam, Phu Giang Nam., JSC stainless steel in Viet Nam, Phu Giang Nam., JSC is currently one of the top 10 largest stainless steel suppliers in the domestic market. Our company specializes in imported and trading stainless steel specializing in importing and trading stainless steel that is widely used in many fields such as mechanical engineering, food industry, pharmaceuticals, chemicals, cement, etc. The products we provide meet the quality standards of ASTM, AISI, JIS, DIN...due to being imported from suppliers with leading reputations in the world such as OUTOKUMPU (Finland), SSAB(Sweden), ACERINOX (Spain), APERAM(Begium) POSCO, SM(Korea), YASCO(Taiwan) ,JINDAN ,TISCO(China),TINGSHAN(Indonesia),...We have a team of talented, enthusiastic, and dynamic staff. A good business platform has connected Phu Giang Nam.,JSC with the world's leading suppliers: Japan, Korea, Europe... Our customers are mainly mechanical factories and construction companies in the fields: food, sugar cane, oil and gas, chemicals, etc. Phu Giang Nam.,JSC believes that it can carry out material supply contracts with good quality, the most competitive prices, and on schedule.



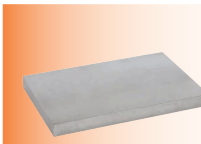
● Stainless Steel Plate



Stainless steel thick plate
Length:2000mm-2500mm Width:1000mm-1500mm
Thickness:0.3mm-6.0mm
Material:201/2B, 310S/2B, 316/2B, 304/2B, 321/2B
Standard:ASTM, AISI, JIS, GB, DIN, EN



Stainless steel checkered plate
Length:2000mm-12000mm Width:1500mm-3500mm
Thickness:3.0mm-6.0mm
Material:304, 316
Standard:ASTM, AISI, JIS, GB, DIN, EN



Stainless steel extra-thick plate
Length:2000mm-12000mm Width:1500mm-3500mm
Thickness:3.0mm-200mm
Material:308/No.1, 309/No.1, 303/No.1, 304/No.1, 310S/No.1, 316/No.1, 317/No.1, 321/No.1, 420/2/No.1, 430 No.1, N7, Mn.1
Standard :ASTM, AISI, JIS, GB, DIN, EN

Thickness: 0.3mm - 200mm
Width: 1000mm, 1219mm, 1250mm, 1500mm, 1530mm, 1800mm, 2000mm, 2200mm, etc.
Length: 1500mm, 2000mm, 2438mm, 3000mm, 6000mm, etc.
Standard: ASTM, JIS, AISI, GB, DIN, EN
Surface Finish: BA, 2B, No.1, No.4, HL, 8, 12K
Certification: ISO, SGS, BV
Technique: Hot rolled or cold drawing
Edge: Mill Edge / Slit Edge
Quality: SGS Inspection
Main Market: Asia / Europe / South America
Delivery Time: Within 1-3 working days
Payment Terms: T/T, L/C, and Western Union, etc.
Grade (ASTM UNS): 303, 304, 304L, 321, 316, 316L, 317L, 347H, 308, 309S, 310S, 904L, S32205, 2507, 254SMOS, 32760, S31703, S31603, 316Ti, S31635, 5S31254, N08926, 2205, S32205, S31008, S30908, S32750, S32760, 630, etc.
Grade (EN): 1.4301, 1.4307, 1.4541, 1.4401, 1.4404, 1.4571, 1.4438, 1.4539, 1.4547, 1.4529, 1.4410, 1.4501, 1.4462, 1.4845, 1.4542, etc.

Stainless Steel Coil

Stainless Steel Coil	Details
Thickness	0.3-16mm
Width	1000, 1219mm, 1250, 1500mm, 1530, 1800mm, 2000mm, 2200mm etc
Length	1000mm, 1219mm, 1500mm, 1800mm, 2000mm, 2500mm, 3000mm, 3500mm, etc
Standard	ASTM JIS AISI GB DIN EN
Surface Finished	BA, 2B, NO.1, NO.4, HL, 8K, 12K
Certification	ISO, SGS, BV
Technique	Hot rolled or cold drawing
Edge	Mill Edge / Slit Edge
Quality	SGS Inspection
Main market	Asia / Europe / South America
Delivery time	Within 1- 5 Working Days
Payment Terms	T/T L/C and Western Union etc
Grade (ASTM UNS)	301FH, 303, 304, 304L, 321, 316, 316L, 317L, 347H, 308, 309S, 310S, 904L, S32205, 2507, 254SMOS, 32760, S31703, S31603, 316Ti, S3163, S531254, N08926, 2205, S32205, S31008, S30908, S32750, S32760, 630etc
Grade (EN)	1.4301, 1.4307, 1.4541, 1.4401, 1.4404, 1.4571, 1.4438, 1.4539, 1.4547, 1.4529, 1.4410, 1.4501, 1.4462, 1.4845, 1.4542, etc



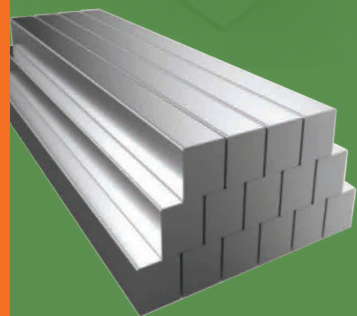
Product Parameter

Stainless Steel Bar



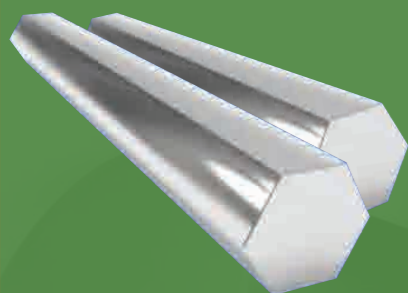
Stainless steel round bar

Stainless steel bar includes stainless steel round bar, stainless steel square bar, stainless steel hexagonal bar, stainless steel flat steel.



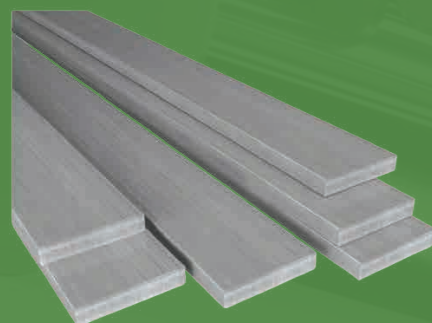
Stainless steel square bar

Stainless steel bar stock offers a range of unique benefits for numerous industries and applications throughout the globe. The benefits of stainless steel bar include material longevity, corrosion resistance, attractive appearance, ease of fabrication, impact resistance and long-term value. Stainless steel is one of the most widely used metals in the modern construction world.



Stainless steel hexagonal bar

High resistance to corrosion: Due to the stainless steel's natural chromium oxide film, stainless steel does not corrode or rust as easily as other materials which makes them ideal for applications that are exposed to harsh chemicals or the elements.

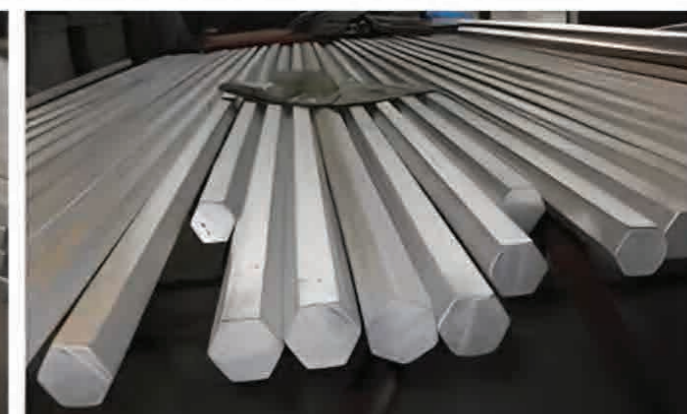
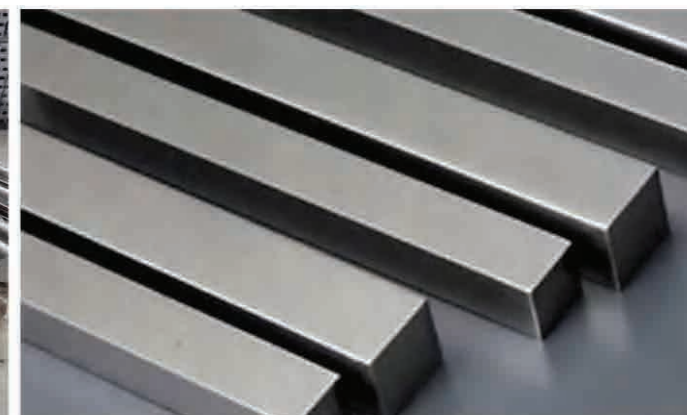


Stainless steel flat steel

Hygiene-perfect material: For those who are in the medical field, stainless steel will be the best material as it offers great protection from any harmful dirt or bacteria.

Type		Stainless Steel Bar
Outer diameter	Round bar	3.0mm - 500mm
	Hexagon Bar	3mm-100mm
	Square Bar	1/2" to 10", thickness: 2mm-200mm, can provide customized
	Flat steel	1/2" to 10", thickness: 2mm-200mm, can provide customized
Length		4-6 meters, length can be customized
Standard		ASTM/AISI/JIS/GB/DIN/EN
Tolerances:		h9, h10, h11, K12, K13, EN 10060
Surmdard		Black, bright polished, rough turning, matt suarface treatment, NO.4.BA, ETC
Scope of application		Stainless steel bars aru used in a variety of industries such as shipbuilding, defense, automotive, textiles, paper and pulp, manufacturing, cement, heavy earthmoving equipment and construction

Stainless Steel Bar Display



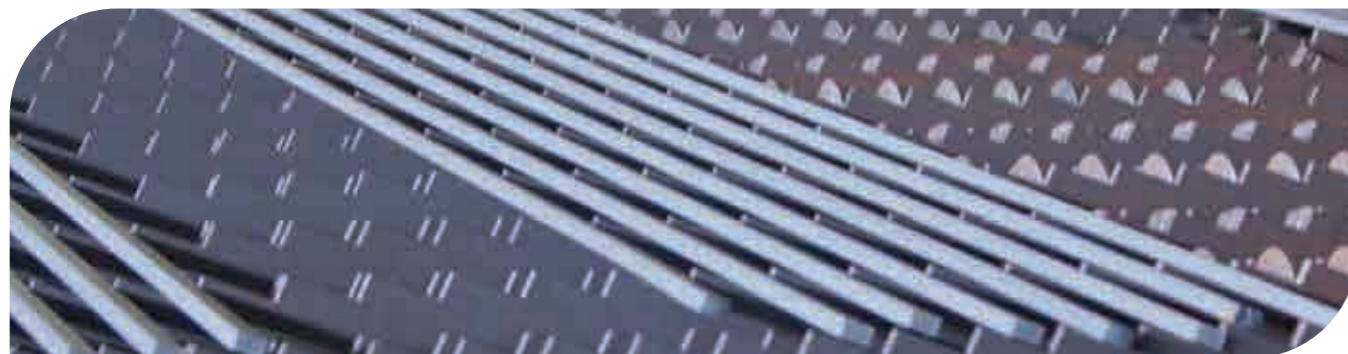
● **Grades:**

ASTM:
304, 304I, 304h, 303, 316, 316L, 321, 316Ti

DIN:
1.4301, 1.4307, 1.4306, 1.4841, 1.4305, 1.4401, 1.4404, 1.4541 and 1.4571

● **List Of Drawn Flat Bar Sizes**

Sr. No.	Sizes (Inch)	Sr. No.	Sizes (mm)
1	19.05 X 6.35	1	20X 5
2	19.05 X 7.94	2	20 X 6
3	19.05 X 9.53	3	20 X 8
4	19.05 X 12.7	4	20 X 10
5	19.05 X 15.88	5	20 X 12
6	25.4 X 6.35	6	25 X 5
7	25.4 X 7.94	7	25 X 6
8	25.4 X 9.53	8	25 X 8
9	25.4 X 12.7	9	25 X 9
10	25.4 X 15.88	10	25 X 10
11	25.4 X 19.05	11	25 X 12
12	31.75 X4.76	12	25 X 15
13	31.75 X 6.35	13	25 X 20
14	31.75 X 9.53	14	30 X 5
15	31.75 X 12.7	15	30 X 6
16	31.75 X 15.88	16	30 X 8
17	31.75 X 19.05	17	30 X 9
18	31.75 X 25.4	18	30 X 10
19	31.75 X 4.76	19	32 X 12
20	31.75 X 6.35	20	32 X 15
21	31.75 X 7.94	21	38 X 9



● **List Of Drawn Flat Bar Sizes**

Sr. No.	Sizes (Inch)	Sr. No.	Sizes (mm)
22	38.1 X 9.53	22	38 X 12
23	38.1 X 12.7	23	38 X 15
24	38.1 X 15.88	24	40 X 5
25	38.1 X 19.05	25	40 X 6
26	38.1 X 25.4	26	40 X 8
27	38.1 X 31.75	27	40 X 9
28	44.45 X 6.35	28	40 X 10
29	44.45 X 15.88	29	40 X 12
30	44.45 X 19.05	30	40 X 15
31	44.45 X 25.4	31	40 X 20
32	44.45 X 31.75	32	50 X 5
33	50.8 X 6.35	33	50 X 6
34	50.8 X 7.94	34	50 X 8
35	50.8 X 9.53	35	50 X 9, 50 X 10
36	50.8 X 12.7	36	50 X 12
37	50.8 X 15.88	37	50 X 15
38	50.8 X 19.05	38	50 X 20
39	50.8 X 25.4	39	50 X 25
40	50.8 X 31.75	40	50 X 30
41	50.8 X 38.1	41	50 X 40
42	63.5 X 6.35	42	54 X 12
43	63.5 X 9.53	43	60 X 6
44	63.5 X 12.7	44	60 X 8
45	63.5 X 15.88	45	60 X 9
46	63.5 X 19.05	46	60 X 10
47	63.5 X 25.4	47	60 X 12
48	63.5 X 31.75	48	60 X 15
49	76.2 X 6.35	49	60 X 20, 60 X 25
50	76.2 X 9.53	50	60 X 30
51	76.2 X 12.7	51	60 X 40
52	76.2 X 15.88	52	65 X 9
53	76.2 X 19.05	53	65 X 12
54	76.2 X 25.4	54	70 X 8
55	101.6 X 6.35	55	70 X 9
56	101.6 X 9.53	56	70 X 10
57	101.6 X 12.70	57	70 X 12
58	101.6 X 9.53	58	70 X 15

● **List Of Drawn Flat Bar Sizes**

Sr. No.	Sizes (Inch)	Sr. No.	Sizes (mm)
59	101.6 X 12.70	59	70 X 20, 70 X 25, 70 X 30
60	101.6 X 15.88	60	75 X 6
61	101.6 X 19.05	61	75 X 8
62	101.6 X 25.4	62	75 X 9
63	101.6 X 31.75	63	75 X 10
64		64	75 X 12
65		65	75 X 15, 75 X 20, 75 X 25, 75 X 30
66		66	80 X 8
67		67	80 X 10
68		68	80 X 12
69		69	80 X 15, 80 X 20, 80 X 25, 80 X 30
70		70	100 X 6
71		71	100 X 8
72		72	100 X 9
73		73	100 X 10
74		74	100 X 12
75		75	100 X 15, 100 X 20, 100 X 25, 100 X 30

Sr. No.	Equal Angle Size Range
1	19 X 19 X 3
2	19.05 X 19.05 X 3.17
3	20 X 20 X 3 / 4
4	25 X 25 X 3 / 4 / 5 / 6
5	25.4 X 25.4 X 3.17 / 4.76 / 6.35
6	30 X 30 X 3 / 4 / 5 / 6
7	31.7 X 31.7 X 3.17 / 4.76 / 6.35
8	32 X 32 X 3
9	35 X 35 X 3 / 4 / 5 / 6
10	38 X 38 X 3 / 4 / 5 / 6
11	38.1 X 38.1 X 3.17 / 4.76 / 6.35
12	40 X 40 X 3 / 4 / 4.5 / 5 / 6
13	44.45 X 44.45 X 3.17 / 4.76 / 6.35
14	45 X 45 X 3 / 4 / 5 / 6
15	50 X 50 X 3 / 4 / 4.5 / 5 / 6 / 7 / 8 / 9 / 10
16	50.8 X 50.8 X 3.17 / 4.76 / 6.35 / 7.94 / 9.53
17	60 X 60 X 5 / 6 / 7 / 8 / 10
18	63.5 X 63.5 X 4.76 / 6.35 / 7.94 / 9.53
19	65 X 65 X 5 / 6 / 7 / 8 / 9 / 10

20	70 X 70 X 5 / 6 / 7 / 8 / 9 / 10
21	75 X 75 X 5 / 6 / 7 / 8 / 9 / 10 / 12
22	76.2 X 76.2 X 4.76 / 6.35 / 7.94 / 9.53 / 12.7
23	80 X 80 X 6 / 7 / 8 / 10
24	88.9 X 88.9 X 6.35 / 7.94 / 9.53
25	90 X 90 X 6 / 8 / 9 / 10
26	100 X 100 X 6 / 7 / 8 / 9 / 10 / 12
27	101.6 X 101.6 X 6.35 / 7.94 / 9.53 / 12.7
Large Angle	
28	120 X 120 X 10 / 12 / 13
29	127 X 127 X 9.53 / 12.7
30	150 X 150 X 10 / 12 / 13 / 15
31	152.4 X 152.4 X 9.53 / 12.7
Sr. No.	Unequal Angle Size Range
1	50 X 30 X 5
2	60 X 30 X 5
3	60 X 40 X 5 / 6
4	75 X 50 X 6
5	80 X 40 X 6
6	100 X 50 X 6
7	120 X 80 X 8 / 10
8	130 X 65 X 8 / 10
9	50.8 X 25.4 X 6.35
10	76.2 X 38.1 X 6.35
11	76.2 X 50.8 X 4.76 / 6.35 / 9.53
12	101.6 X 76.2 X 6.35 / 9.53
13	125 X 75 X 9
14	127 X 76.2 X 6.35 / 9.53
15	150 X 100 X 10
16	152 X 76.2 X 9.53
17	152.4 X 101.6 X 9.53 / 12.7

Sr. No.	Flat Size Range, Width X Thickness (mm)
1	19.05 x 3.17 / 4.76 / 6.35 / 7.94 / 9.53 / 12.7 x 15.88
2	20 x 3 / 4 / 5 / 6 / 8 / 9 / 10 / 12 / 15
3	25 x 3 / 4 / 4.5 / 5 / 6 / 8 / 9 / 10 / 12 / 15 / 20
4	25.4 X 3.17 / 4.76 / 6.35 / 7.94 / 9.53 / 12.7 / 15.88 / 19.05
5	30 X 3 / 4 / 4.5 / 5 / 6 / 8 / 9 / 10 / 12 / 15 / 16 / 20 / 22 / 25
6	31.7 X 3.17 / 4.76 / 6.35 / 7.94 / 9.53 / 12.7 / 15.88 / 19.05 / 25.4
7	32 X 4 / 4.5 / 5 / 6 / 8 / 9 / 10 / 12 / 15
8	35 X 4 / 5 / 6 / 8 / 9 / 10 / 12 / 15 / 20 / 22 / 25 / 30
9	38 X 4 / 4.5 / 5 / 6 / 9 / 12 / 15 / 19 / 20 / 25
10	38.1 X 3.17 / 4.76 / 6.35 / 7.94 / 9.53 / 11.11 / 12.7 / 15.88 / 19.05 / 25.4 / 31.75
11	40 X 3 / 4 / 4.5 / 5 / 6 / 8 / 9 / 10 / 12 / 15 / 16 / 20 / 25 / 30
12	44.45 X 4.76 / 6.35 / 7.94 / 9.53 / 12.7 / 15.88 / 19.05 / 25.4 / 31.75
13	45 X 4 / 5 / 6 / 8 / 9 / 10 / 12 / 15 / 20 / 25 / 30 / 35 / 40
14	50 X 4 / 4.5 / 5 / 6 / 8 / 9 / 10 / 12 / 14 / 15 / 16 / 19 / 20 / 25 / 30 / 35 / 40
15	50.8 X 4.76 / 6.35 / 7.94 / 9.53 / 12.7 / 15.88 / 19.05 / 25.4 / 31.75 / 38.1
16	55 X 10 / 12 / 15 / 16
17	60 X 5 / 6 / 8 / 9 / 10 / 12 / 15 / 16 / 19 / 20 / 25 / 30 / 35 / 40
18	63.5 X 6.35 / 7.94 / 9.53 / 11.11 / 12.7 / 15.88 / 19.5 / 25.4 / 31.75 / 38.1
19	65 X 5 / 6 / 8 / 9 / 10 / 12 / 15 / 16 / 20 / 25 / 30 / 35 / 40
20	70 X 5 / 6 / 8 / 9 / 10 / 12 / 15 / 20 / 25 / 30 / 35 / 40
21	75 X 5 / 6 / 7 / 8 / 9 / 10 / 12 / 15 / 16 / 19 / 20 / 25 / 30 / 35 / 40 / 50
22	76.2 X 4.76 / 6.35 / 7.94 / 9.53 / 12.7 / 15.88 / 19.05 / 25.4 / 31.75 / 38.1 / 50.8
23	80 X 5 / 6 / 8 / 9 / 10 / 12 / 15 / 20 / 25 / 30 / 35 / 40 / 50
24	88.9 / 6.35 / 9.53 / 12.7 / 15.88 / 19.05 / 25.4 / 31.75 / 38.1
25	90 X 6 / 8 / 10 / 12 / 15 / 16 / 19 / 20 / 25 / 30 / 40
26	100 X 6 / 8 / 9 / 10 / 12 / 15 / 16 / 20 / 25 / 30 / 35 / 40 / 45 / 50 / 60
27	101.6 X 6.35 / 7.94 / 9.53 / 12.7 / 15.88 / 19.05 / 25.4 / 31.75 / 38.1 / 50.8
28	110 X 10 / 15 / 20 / 25 / 30
29	120 X 8 / 10 / 12 / 15 / 16 / 20 / 25 / 30 / 40
30	125 X 9 / 10 / 12 / 15 / 20 / 25 / 30 / 40
31	127 X 9.53 / 12.7 / 15.88 / 19.5 / 25.4 / 31.75 / 38.1
32	130 X 10 / 15 / 20 / 25 / 30
33	140 X 10 / 12 / 15 / 20 / 25 / 30
34	150 X 9 / 10 / 12 / 15 / 16 / 20 / 25 / 30 / 40
35	152.4 X 9.53 / 12.7 / 15.88 / 19.5 / 25.4 / 31.75 / 38.1
36	175 X 16

● **List of Polish Flat Bar Sizes**

Sr. No.	Sizes	Sr. No.	Size	Sr. No.	Sizes
1	20 X 5	38	50 X 10	75	75 X 20
2	20 X 6	39	50 X 12	76	75 X 25
3	20 X 8	40	50 X 15	77	75 X 30
4	20 X 10	41	50 X 16	78	80 X 5
5	20 X 12	42	50 X 20	79	80 X 6
6	20 X 15	43	50 X 25	80	80 X 8
7	25 X 5	44	50 X 30	81	80 X 10
8	25 X 6	45	50 X 32	82	80 X 15
9	25 X 8	46	50 X 40	83	80 X 20
10	25 X 10	47	54 X 12	84	80 X 25
11	25 X 12	48	60 X 5	85	80 X 30
12	25 X 15	49	60 X 6	86	100 X 6
13	30 X 5	50	60 X 8	87	100 X 8
14	30 X 6	51	60 X 10	88	100 X 10
15	30 X 8	52	60 X 12	89	100 X 12
16	30 X 9	53	60 X 15	90	100 X 15
17	30 X 10	54	60 X 20	91	100 X 20
18	30 X 12	55	60 X 30	92	100 X 25
19	30 X 15	56	60 X 40	93	100 X 30
20	30 X 20	57	65 X 9	94	120 X 8
21	32 X 12	58	65 X 12	95	120 X 10
22	32 X 15	59	65 X 15	96	120 X 12
23	38 X 9	60	70 X 6	97	120 X 15
24	38 X 12	61	70 X 8	98	120 X 20
25	38 X 15	62	70 X 9	99	120 X 25
26	40 X 4	63	70 X 10	100	120 X 30
27	40 X 5	64	70 X 12	101	127 X 9
28	40 X 6	65	70 X 15	102	127 X 12
29	40 X 8	66	70 X 20	103	150 X 9
30	40 X 10	67	70 X 25	104	150 X 10
31	40 X 12	68	70 X 30	105	150 X 12
32	40 X 15	69	75 X 6	106	150 X 15
33	40 X 20	70	75 X 8	107	150 X 20
34	40 X 30	71	75 X 9	108	150 X 25
35	50 X 5	72	75 X 10	109	150 X 30
36	50 X 6	73	75 X 12		
37	50 X 8	74	75 X 15		



Sr. No.	Channel Size Range Inch (mm)	Type
1	3" X 1.41" X 0.17" X 0.273" (76.2 X 35.81 X 4.32 X 6.93)	Taper
2	4" X 1.584" X 0.184" X 0.296" (101.6 X 40.23 X 4.67 X 7.52)	Taper
3	4" X 1.721" X 0.321" X 0.296" (101.6 X 43.71 X 8.15 X 7.52)	Taper
4	5" X 1 7/8" X 3/8" (127 X 47.625 X 9.52)	Taper
5	5" X 1.75" X 0.19" X 0.32" (127 X 44.45 X 4.83 X 8.13)	Taper
6	5" X 1.885" X 0.325" X 0.32" (127 X 47.88 X 8.26 X 8.13)	Taper
7	6" X 1.92" X 0.2" X 0.343" (152.4 X 48.77 X 5.08 X 8.71)	Taper
8	6" X 2.034" X 0.314" X 0.343" (152.4 X 51.66 X 7.98 X 8.71)	Taper
9	8" X 2.53" X 0.487" X 0.39" (203.2 X 64.26 X 12.37 X 9.90)	Taper
10	40 X 35 X 5 X 7	Taper
11	50 X 25 X 5 X 6	Taper
12	50 X 38 X 5 X 7	Taper
13	60 X 30 X 6 X 6	Taper
14	65 X 42 X 5.5 X 7.5	Taper
15	75 X 40 X 4.7 X 6.9	Taper
16	80 X 45 X 6 X 8	Taper
17	100 X 50 X 6 X 8.5	Taper
18	120 X 55 X 7 X 9	Taper
19	140 X 60 X 7 X 10	Taper
20	160 X 65 X 7.5 X 10.5	Taper
21	2" X 1" X 1/8" (50.8 X 25.4 X 3.18)	Non - Taper
22	2" X 1" X 3/16" (50.8 X 25.4 X 4.76)	Non - Taper
23	2" X 1" X 1/4" (50.8 X 25.4 X 6.35)	Non - Taper
24	3" X 1 3/8" X 3/16" (76.2 X 34.925 X 4.76)	Non - Taper
25	3" X 1 1/2" X 3/16" (76.2 X 38.1 X 4.76)	Non - Taper
26	3" X 1 1/2" X 1/4" (76.2 X 38.1 X 6.35)	Non - Taper
27	4" X 2" X 1/4" (101.6 X 50.8 X 6.35)	Non - Taper
28	4" X 1 3/4" X 1/4" (101.6 X 44.45 X 6.35)	Non - Taper
29	60 X 30 X 5 X 5	Non - Taper
30	80 X 40 X 5 X 5	Non - Taper
31	80 X 40 X 6 X 6	Non - Taper
32	100 X 50 X 5 X 5	Non - Taper
33	100 X 50 X 6 X 6	Non - Taper
34	120 X 60 X 6 X 6	Non - Taper
35	130 X 65 X 6 X 6	Non - Taper
36	150 X 75 X 6 X 6	Non - Taper

Sr. No.	I (S) Beam Size Range
1	76.2 X 59.2 X 4.3 X 6.6 (S 3)
2	101.6 X 67.6 X 4.9 X 7.4 (S 4)
3	127 X 76.3 X 5.4 X 8.3 (S 5 X 10)
4	152.4 X 84.6 X 5.9 X 9.1 (S6 X 12.5)

Product	Technical Specification (EN Standards)	Technical Specification (ASTM Standards)
Drawn Flat Bars	EN 10278 (h11), EN 10088-3, EN 10272, AD 2000 W2/W10, EN 10088-5 (If reqd.)	ASTM A 276, ASTM A 484/484M
Polished Flat Bars	EN 10088-3, EN 10058, EN 10272, AD 2000 W2/W10, EN 10088-5 (If reqd.)	ASTM A 276, ASTM A 484/484M, ASME SA 479
Equal Angles/ Unequal Angles	EN 10088-3, EN 10056-2, EN 10272, AD 2000 W2/W10, EN 10088-5 (If reqd.)	ASTM A 276, ASTM A 484/484M, ASME SA 479
Flat	EN 10088-3, EN 10058, EN 10272, AD 2000 W2/W10, EN 10088-5 (If reqd.)	ASTM A 276, ASTM A 484/484M, ASME SA 479
Channels	EN 10088-3, EN 10279, EN 10272, AD 2000 W2/W10, EN 10088-5 (If reqd.)	ASTM A 276, ASTM A 484/484M, ASME SA 479
I-Beam	EN 10088-3, DIN 1025, EN 10272, AD 2000 W2/W10, EN 10088-5 (If reqd.)	ASTM A 276, ASTM A 6 / A 6 M, ASME SA 479





**Stainless Steel Pipes
JIS G3459, CNS 6331**

**Large Diameter Stainless Steel Pipes
JIS G3458, CNS 13517**

Nominal Diameter NPS		Outside Diameter OD(mm)	Nominal Wall Thickness(mm)											
A	B		SCH-5S	SCH-10S	SCH-20S	SCH-40	Other Common Thickness							
8	1/4"	13.8	1.2	1.65	2.0	2.2								
10	3/8"	17.3	1.2	1.65	2.0	2.3	1.5	2.5						
-	-	20.4	-				2.0	2.5						
15	3/2"	21.7	1.65	2.1	2.5	2.8	2.0	3.0	3.2					
-	-	26.4					2.0	2.5						
20	3/4"	27.2	1.65	2.1	2.5	2.9	2.0	2.8	3.0	3.2				
-	-	33.4					2.0	2.5	3.0					
25	1"	34.0	1.65	2.8	3.0	3.4	2.0	2.5	3.2	3.5	4.0			
32	1 1/4"	42.7	1.65	2.8	3.0	3.6	1.5	2.0	2.5	3.2	3.5	4.0	4.5	5.0
40	1 1/2"	48.6	1.65	2.8	3.0	3.7	1.5	2.0	2.5	3.2	3.5	4.0	4.5	5.0
50	2"	60.5	1.65	2.8	3.5	3.9	1.5	2.0	2.5	3.0	3.2	4.0	4.5	5.0
65	2 1/2"	76.3	2.1	3.0	3.5	5.2	1.65	2.0	2.5	3.2	4.0	5.0	5.5	
80	3"	89.1	2.1	3.0	4.0	5.5	2.0	2.5	3.2	3.5	4.5	5.0	6.0	
90	3 1/2"	101.6	2.1	3.0	4.0	5.7	2.0	2.5	3.5	5.0	6.0			
100	4"	114.3	2.1	3.0	4.0	6.0	2.0	2.5	3.2	3.5	4.5	5.0	5.5	6.5
125	5"	139.8	2.8	3.4	5.0	6.6	2.5	3.0	3.5	4.0	5.5	6.0	6.5	
150	6"	168.2	2.8	3.4	5.0	7.1	3.0	3.5	4.0	5.5	6.0	6.5	7.0	
200	8"	216.3	2.8	4.0	6.5	8.2	3.0	3.5	4.5	5.0	6.0	8.0	8.0	
250	10"	267.4	3.4	4.0	6.5	9.3	3.0	3.5	4.5	5.0	6.0	8.0	9.0	
300	12"	318.5	4.0	4.0	6.5	10.3	3.0	3.0	5.0	6.0	7.0	8.0		
350	14"	355.6					11.1	5.0	6.0	8.0				
400	16"	406.4					12.7							
450	18"	457.2					14.3							
500	20"	508.0					15.1							
550	22"	558.0					15.9							
600	24"	609.6					17.5							
650	26"	660.4					18.9							
Remark			(1) Other nominal diameter and wall thickness subject to the approval of vendor and purchaser with MOQ requirement. (2) ASTM A240 (3) 0.35mm											

Nominal Diameter NPS		Outside Diameter OD(mm)	Nominal Wall Thickness(mm)										
A	B		SCH-5S	SCH-10S	SCH-20S	SCH-40	Other Common Thickness						
350	14"	355.6	4.0	5.0		11.1	6.0	9.5	10.0				
400	16"	406.4	4.5	5.0		12.7	4.0	6.0	9.5	10.0			
450	18"	457.2	4.5	5.0		14.3	4.0	6.0	9.5				
500	20"	508.0	5.0	5.5		15.1	6.0	6.5	8.0	10.0			
550	22"	558.8	5.0	5.5		15.9	6.0	6.5	8.0	10.0			
600	24"	609.6	5.5	6.5		17.5	6.0	10.0					
650	26"	660.4	5.5	8.0			9.5						
700	28"	711.0	5.5	8.0				9.5					
750	30"	762.0	6.5	8.0				9.5					
800	32"	812.8		8.0				9.5					
850	34"	863.6		8.0				9.5					
900	36"	914.4		8.0				9.5					
1000	40"	1016.0		9.5	14.3								
Remark		(1) Other nominal diameter and wall thickness subject to the approval of vendor and purchaser (2) ASTM A240											

Tolerance
ASTM 778/ASTM A312/CNS 6331/G3124/JIS 3459

Item/ Specification	Outside Diameter								Wall Thickness		Straightness	Length
	O.D (mm)	48.3	48.26 ~ 114.3	114.3 ~ 219.08	219.08 ~ 457.2	457.2 ~ 660.4	660.4 ~ 863.6	863.6 ~ 1219.2	+22.5% -12.5%	6.4mm/6m		
ASTM		+0.4 -0.8	+0.8 -0.8	+1.6 -0.8	+2.4 -0.8	+3.2 -0.8	+4.0 -0.8	+4.8 -0.8				+50mm -0mm
CVS/JIS	O.D	<30mm			≥30mm			W.T	<2mm	≥2mm		≥Defined Length
	Tolerance	±0.30mm			±1%			Tolerance	±0.2mm	±10%		

Stainless Steel PIPE Fitting

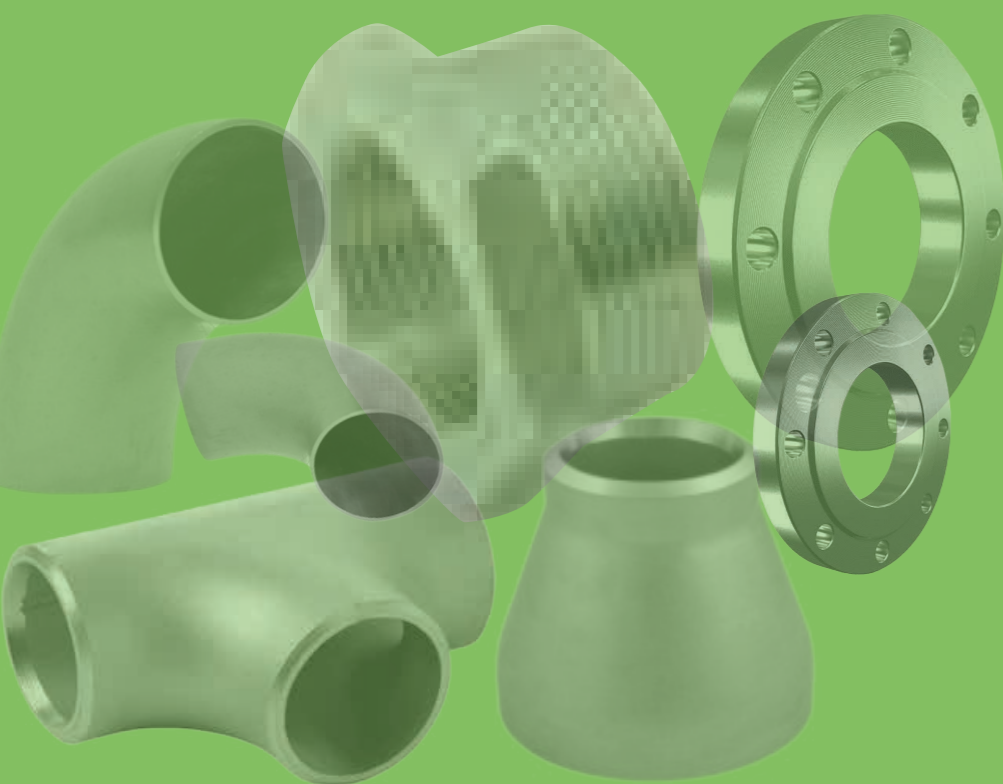
Elbows, flanges, tees, and concentric reducer all belong to pipe fittings.

Elbow: To change the direction of the pipe, 90° and 45° elbows are commonly used.

Flange: Used to connect two pipes, there are flat welded flange and wire flange.

Tee: Used to change the direction of the pipeline, there are equal diameter tee and reducing diameter tee.

Concentric reducer: Used to change the diameter of the pipeline.



Stainless Steel Flange

Type	WN Flange, So Flange, LJ Flange, LWN Flange, SW Flange, Orifice Flange, Reducing Flange, Figure 8 blind (blank & spacer)
Special Flange	custom made
Materials	ASTM/ASME SA182 F304, F304L, F304H, F316, F316L, F321, F321H, F347H
Dimension	150# 300# 600# DN15-DN1500 / 900# DN15-DN1000 / 1500# DN15-DN600 / 2500# DN15-DN300
Connection type	Raised Face, Flat Face, Ring Type Joint, Lap-Joint Face, Large Male-Female, Small Male-Female, Large tongue groove, Small tongue groove, etc.



Stainless Steel Elbow

Type	seamless elbow, welded elbow
Degree	45 degree, 90 degree, 180 degree
R	1D, 1.5D etc, as required
Size	OD 1-1500mm, thickness 0.1-150mm/SCH5-SCH160-SCHXXS



Stainless Steel Tee

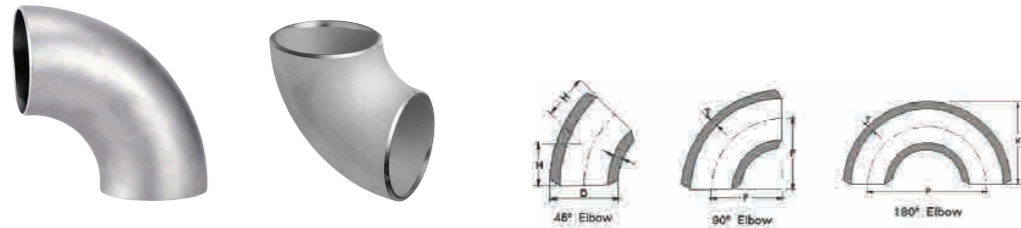
Model	1. Tee (Straight and Reducing) 2. 180 DEG Returns
Type	Equal/Straight tee, reduced tee, Y tee, lateral tee, Barred tee, split tee, tee cross
Wall Thickne	SCH10, SCH20, SCH30, STD, SCH40, SCH60, SCH80, SCH100, SCH120, SCH160, XS, XXS
Size	S1/2"-48" (DN15-DN1200)
Connection	bevel end/BE/buttweld



Stainless Steel Concentric Reducer

Type	concentric reducer, eccentric reducer
Nominal Wall Thickness	SCH5-SCH160, STD, XS, XXS
Size	1/2"-60" SCH10s-XXS / Welded: from 20" to 72" (or as customer requirements)
Application	Heat exchanger, Liquid delivery, Structure, etc.

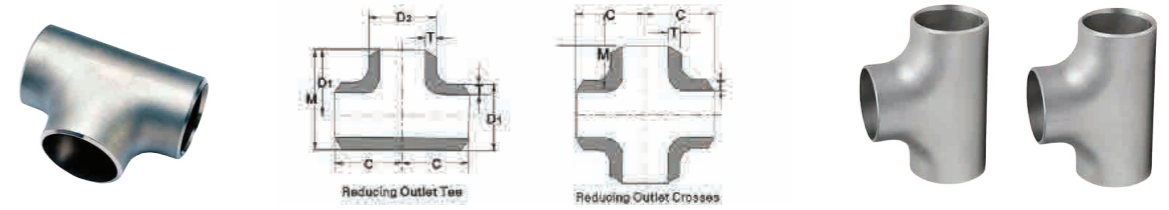
LONG/SHORT RADIUS ELBOWS



Nominal Pipe Size		Center to End					Centerto Center		Back to Faces		
		Series A		Series B		45o Elbows		180o Return		180o Return	
						H	F	P		K	
DN	INCH	Long Radius	Short Radius	Long Radius	Short Radius	Long Radius	Short Radius	Long Radius	Short Radius		
15	1/2"	21.3	18	16	38	76	—	48	—		
20	3/4"	26.9	25	16	38	76	—	51	—		
25	1"	33.7	32	16	38	25	76	51	56	41	
32	1.1/4"	42.4	38	20	48	32	95	64	70	52	
40	1.1/2"	48.3	45	24	57	38	114	76	83	62	
50	2"	60.3	57	32	76	51	152	102	106	81	
65	2.1/2"	76.1(73)	76	40	95	64	191	127	132	100	
80	3"	88.9	89	47	114	76	229	152	156	121	
90	3.1/2"	101.6	—	55	133	89	267	178	184	140	
100	4"	114.3	108	63	152	102	305	203	210	159	
125	5"	139.7(141.3)	133	79	190	127	381	254	262	197	
150	6"	168.3	159	95	229	152	457	305	313	237	
200	8"	219.1	219	126	305	203	610	406	414	313	
250	10"	273	273	158	381	254	762	508	518	391	
300	12"	323.9	325	189	457	305	914	610	619	467	
350	14"	355.6	377	221	533	356	1067	711	711	533	
400	16"	406.4	426	253	610	406	1219	813	813	610	
450	18"	457.2	478	284	686	457	1372	914	914	686	
500	20"	508	529	316	762	508	1524	1016	1016	762	
550	22"	559	—	347	838	559	—	—	—	—	
600	24"	610	630	379	914	610	—	—	—	—	
650	26"	660	—	410	991	660	—	—	—	—	
700	28"	711	720	442	1067	711	—	—	—	—	
750	30"	762	—	473	1143	762	—	—	—	—	
800	32"	813	820	505	1219	813	—	—	—	—	
850	34"	864	—	537	1295	864	—	—	—	—	
900	36"	914	920	568	1372	914	—	—	—	—	
950	38"	965	—	600	1448	965	—	—	—	—	
1000	40"	1016	1020	631	1524	1016	—	—	—	—	
1050	42"	1067	—	663	1600	1067	—	—	—	—	
1100	44"	1118	1120	694	1676	1118	—	—	—	—	
1150	46"	1168	—	726	1753	1168	—	—	—	—	
1200	48"	1220	1220	758	1829	1219	—	—	—	—	

Note:
 1. Does not uses in the parenthesis as far as possible the value
 2. First selects A series

● Straight Tees

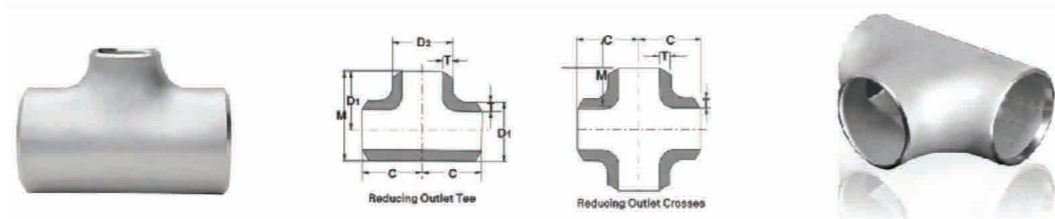


Nominal Pipe Size		Outside diameter at		Center to End	
		D		C	M
DN	INCH	Series A	Series B	Series A	Series B
15	1/2"	21.3	18	25	
20	3/4"	26.9	25	29	
25	1"	33.7	32	38	
32	1.1/4"	42.4	38	48	
40	1.1/2"	48.3	45	57	
50	2"	60.3	57	64	
65	2.1/2"	76.1(73)	76	76	
80	3"	88.9	89	86	
90	3.1/2"	101.6	—	95	
100	4"	114.3	108	105	
125	5"	139.7(141.3)	133	124	
150	6"	168.3	159	143	
200	8"	219.1	219	178	
250	10"	273	273	216	
300	12"	323	325	254	
350	14"	355.6	377	279	
400	16"	406.4	426	305	

Note:
 1. Does not uses in the parenthesis as far as possible the value
 2. Fisst selects a series

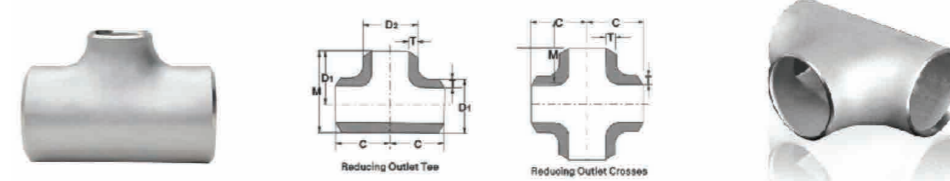
Nominal Pipe Size		Outside diameter at		Center to End	
		D		C	M
DN	INCH	Series A	Series B	Series A	Series B
450	18"	457.2	478	343	
500	20"	508	529	381	
550	22"	559	—	419	
600	24"	610	630	432	
650	26"	660	—	495	
700	28"	711	720	521	
750	30"	762	—	559	
800	32"	813	820	597	
850	34"	864	—	635	
900	36"	914	920	673	
950	38"	965	—	711	
1000	40"	1016	1020	749	
1050	42"	1067	—	762	711
1100	44"	1118	1120	813	762
1150	46"	1168	—	851	800
1200	48"	1220	1220	889	838

Reducing Tees



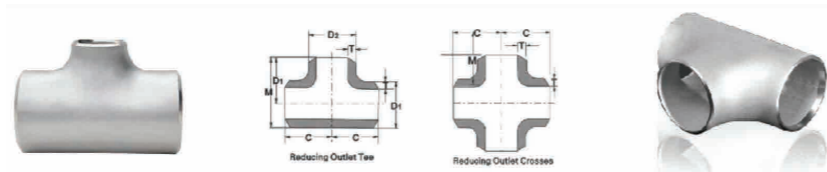
Nominal Pipe Size	Outside Diameter At Bevel		Outside Diameter At Bevel		Center to End	
	D1		D2		C	M
	Series A	Series B	Series A	Series B	Series A	Series B
DN	Series A	Series B	Series A	Series B	Series A	Series B
20x15	26.9	25	21.3	18	29	29
25x20	33.7	32	26.9	25	38	38
25x15	33.7	32	21.3	18	38	38
32x25	42.4	38	33.7	32	48	48
32x20	42.4	38	26.9	25	48	48
32x15	42.4	38	21.3	18	48	48
40x32	48.3	45	42.4	38	57	57
40x25	48.3	45	33.7	32	57	57
40x20	48.3	45	26.9	25	57	57
40x15	48.3	45	21.3	18	57	57
50x40	60.3	57	48.3	45	64	60
50x32	60.3	57	42.4	38	64	57
50x25	60.3	57	33.7	32	64	51
50x20	60.3	57	26.9	25	64	44
65x50	76.1(73)	76	60.3	57	76	70
65x40	76.1(73)	76	48.3	45	76	67
65x32	76.1(73)	76	42.4	38	76	64
65x25	76.1(73)	76	33.7	32	76	57
80x65	88.9	89	76.1(73)	76	86	83
80x50	88.9	89	60.3	57	86	76
80x40	88.9	89	48.3	45	86	73
80x32	88.9	89	42.4	38	86	70
90x80	101.6	—	88.9	—	95	92
90x65	101.6	—	76.1(73)	—	95	89
90x50	101.6	—	60.3	—	95	83
90x40	101.6	—	48.3	—	95	79

Reducing Tees



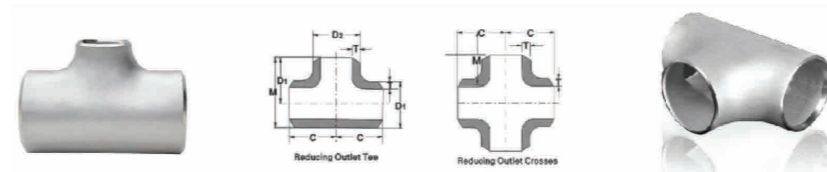
Nominal Pipe Size	Outside Diameter At Bevel		Outside Diameter At Bevel		Center to End	
	D1		D2		C	M
	Series A	Series B	Series A	Series B	Series A	Series B
DN	Series A	Series B	Series A	Series B	Series A	Series B
100x90	114.3	—	101.6	—	105	102
100x80	114.3	108	88.9	98	105	98
100x65	114.3	108	76.1(73)	76	105	95
100x50	114.3	108	60.3	57	105	89
100x40	114.3	108	48.3	45	105	86
125x100	139.7(141.3)	133	114.3	108	124	117
125x90	139.7(141.3)	—	101.6	—	124	114
125x80	139.7(141.3)	133	88.9	89	124	111
125x65	139.7(141.3)	133	76.1(73)	76	124	108
125x50	139.7(141.3)	133	60.3	57	124	105
150x125	168.3	159	139.3(141.3)	133	143	137
150x100	168.3	159	114.3	108	143	130
150x90	168.3	—	101.6	—	143	127
150x80	168.3	159	88.9	89	143	124
150x65	168.3	159	76.1(73)	76	143	121
200x150	219.1	219	168.3	159	178	168
200x125	219.1	219	139.7(141.3)	133	178	162
200x100	219.1	219	114.3	108	178	156
200x90	219.1	219	101.6	—	178	152
250x200	273	273	219.1	219	216	208
250x150	273	273	168.3	159	216	194
250x125	273	273	139.7(141.3)	133	216	191
250x100	273	273	114.3	108	216	184
300x250	323.9	325	273	273	254	241
300x200	323.9	325	219.1	219	254	229
300x150	323.9	325	168.3	159	254	219

Reducing Tees



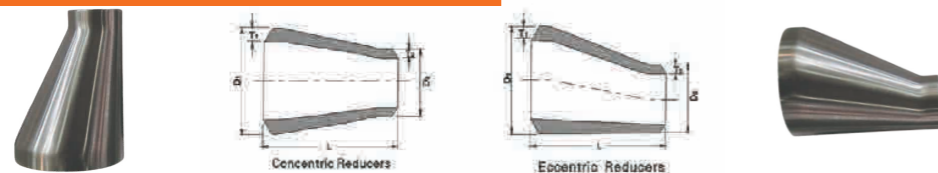
Nominal Pipe Size DN	Outside Diameter D1		Outside Diameter D2		Center to End C	
	Series A	Series B	Series A	Series B	Series A	Series B
	300x125	323.9	325	139.7(141.3)	133	254
350x300	355.6	377	323.9	325	279	270
350x250	355.6	377	273	273	279	257
2350x200	355.6	377	219.1	219	279	248
350x150	355.6	377	168.3	159	279	238
400x350	406.4	426	355.6	377	305	305
400x300	406.4	426	323.9	325	305	295
400x250	406.4	426	273	273	305	283
400x200	406.4	426	219.1	219	305	273
400x150	406.4	426	168.1	159	305	264
450x400	457.2	478	406.4	426	343	330
450x350	457.2	478	355.6	377	343	330
450x300	457.2	478	323.9	325	343	321
450x250	457.2	478	273	273	343	308
450x200	457.2	478	219.1	219	343	298
500x450	508	529	457.2	478	381	368
500x400	508	529	406.4	426	381	356
500x350	508	529	355.6	377	381	356
500x300	508	529	323.9	325	381	346
500x250	508	529	273	273	381	333
500x200	508	529	219.1	218	381	324
550x500	559	—	508	—	419	406
550x450	559	—	457	—	419	394
550x400	559	—	406	—	419	381
600x550	610	—	559	—	432	432
600x500	610	630	508	530	432	432
600x450	610	630	457	480	432	419
650x600	660	—	610	—	495	483
650x550	660	—	559	—	495	470
650x500	660	—	508	—	495	457
700x650	711	—	660	—	521	521
700x600	711	720	610	630	521	508

Reducing Tees



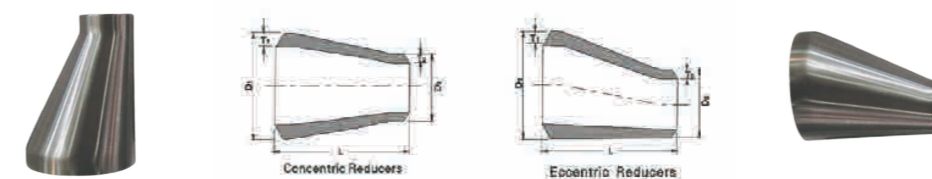
Nominal Pipe Size DN	Outside Diameter D1		Outside Diameter D2		Center to End C	
	Series A	Series B	Series A	Series B	Series A	Series B
	700x550	711	—	599	—	521
750x700	762	—	711	—	559	546
750x650	762	—	660	—	559	546
750x600	762	—	610	—	559	533
800x750	813	—	762	—	597	584
800x700	813	820	711	720	597	572
800x650	813	—	660	—	597	572
850x800	864	—	713	—	635	622
850x750	864	—	762	—	635	610
850x700	864	—	711	—	635	597
900x850	914	—	864	—	673	660
900x800	914	920	813	820	673	648
900x750	914	—	762	—	673	635
950x900	965	—	914	—	711	711
950x850	965	—	864	—	711	698
950x800	965	—	813	—	711	686
1000x950	1016	—	965	—	749	749
1000x900	1016	1020	914	920	749	737
1000x850	1016	—	864	—	749	724
1050x100	1067	—	1016	—	762	711
1050x950	1067	—	965	—	762	711
1050x900	1067	—	914	—	762	711
1100x1050	1118	—	1067	—	813	762
1100x1000	1118	1120	1016	1020	813	749
1100x950	1118	—	965	—	813	737
1150x1100	1168	—	1118	—	851	800
1150x1050	1168	—	1067	—	851	787
1150x1000	1168	—	1016	—	851	775
1200x1150	1220	—	1168	—	889	838
1200x1100	1220	1220	1118	1120	889	838
1200x1050	1220	—	1067	—	889	813

Con/Ecc. Reducers



NORMINAL PIPE SIZE	OUTSIDE DIAMETER AT BEVEL		OUTSIDE DIAMETER AT BEVEL		CENTER TO END
	D1		D2		
	DN	SERIES A	SERIES B	SERIES A	SERIES B
20X15	26.9	25	21.3	18	38
25X20	33.7	32	26.9	25	51
25X15	33.7	32	21.3	18	51
32X25	42.4	38	33.7	32	51
32X20	42.4	38	26.9	25	51
32X80	42.4	38	21.3	18	51
40X32	48.3	45	42.4	38	64
40X25	48.3	45	33.7	32	64
40X20	48.3	45	26.9	25	64
40X15	48.3	45	21.3	18	64
50X40	60.3	57	48.3	45	76
50X32	60.3	57	42.4	38	76
50X25	60.3	57	33.7	32	76
50X20	60.3	57	26.9	25	76
50X50	76.1(73)	76	60.3	57	89
65X40	76.1(73)	76	48.3	45	89
65X32	76.1(73)	76	42.4	38	89
65X25	76.1(73)	76	33.7	32	89
80X65	88.9	89	76.1(73)	76	89
80X50	88.9	89	60.3	57	89
80X40	88.9	89	45.3	45	89
80X32	88.9	89	42.4	38	89
90X80	101.6	-	88.9	-	102
90X65	101.6	-	76.1(73)	-	102
90X50	101.6	-	60.3	-	102
90X40	101.6	-	48.3	-	102
90X32	101.6	-	42.4	-	102
100X90	114.3	-	101.6	-	102
100X80	114.3	108	88.9	89	102
100X65	114.3	108	76.1(73)	76	102
100X50	114.3	108	60.3	57	102
500X40	114.3	108	48.3	45	102
125X100	139.7(141.3)	133	114.3	108	127
125X90	139.7(141.3)	-	101.6	-	127
125X80	139.7(141.3)	133	88.9	89	127

Con/Ecc. Reducers



NORMINAL PIPE SIZE	OUTSIDE DIAMETER AT BEVEL		OUTSIDE DIAMETER AT BEVEL		CENTER TO END
	D1		D2		
	DN	SERIES A	SERIES B	SERIES A	SERIES B
125X65	139.7(141.3)	133	76.1(73)	76	127
125X50	139.7(141.3)	133	60.3	57	127
150X125	168.3	159	139.7(141.3)	133	140
150X100	168.3	159	114.3	108	140
150X90	168.3	-	101.6	-	140
150X80	168.3	159	88.9	89	140
150X65	168.3	159	76.1(73)	76	140
200X150	219.1	219	168.3	159	152
200X125	219.1	219	139.7(141.3)	133	152
200X100	219.1	-	114.3	108	152
200X90	219.1	219	101.6	-	152
250X200	273.0	273	219.1	219	178
250X150	273.0	273	168.3	159	178
250X125	273.0	273	139.7(141.3)	133	178
250X100	273.0	273	114.3	108	178
300X250	323.9	325	273	273	203
300X200	323.9	325	219.1	219	203
300X150	323.9	325	168.3	159	203
300X125	323.9	325	139.7(141.3)	133	203
350X300	355.6	377	323.9	325	330
350X250	355.6	377	273.0	273	330
350X200	355.6	377	219.1	219	330
350X150	355.6	377	168.3	159	330
400X350	406.4	426	355.6	377	356
400X300	406.4	426	323.6	325	356
400X250	406.4	426	273.0	273	356
400X200	406.4	426	219.1	219	356
450X400	457.2	478	406.4	426	381
450X350	457.2	478	355.6	377	381
450X300	457.2	478	323.9	325	381
450X250	457.2	478	273.0	273	381
500X450	508.0	529	457.2	478	508
500X400	508.0	529	406.4	426	508
500X350	508.0	529	355.6	377	508
500X300	508.0	529	323.9	325	508

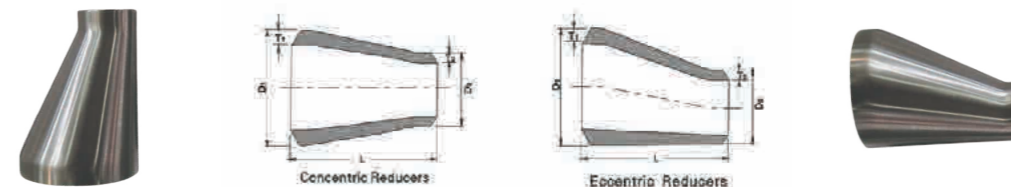
Con/Ecc. Reducers

Nominal Pipe Size	Outside Diameter At Bevel		Outside Diameter At Bevel		Center To End
	D1		D2		End to End L
	Series A	Series B	Series A	Series B	
DN	Series A	Series B	Series A	Series B	End to End L
550x500	559	-	508.0	-	508
550x450	559	-	457.0	-	508
550x400	559	-	406.0	-	508
550x350	559	-	356.0	-	508
600x550	610	-	559.0	-	508
600x500	610	630	508.0	530	508
600x450	610	630	457.0	480	508
600x400	610	630	406.0	426	508
650x600	660	-	610.0	-	610
650x550	660	-	559.0	-	610
650x500	660	-	508.0	-	610
650x450	660	-	457.0	-	610
700x650	711	-	660.0	-	610
700x600	711	720	610.0	630	610
700x550	711	-	599	-	610
700x500	711	720	508	530	610
750x700	762	-	711	-	610
750x650	762	-	660	-	610
750x600	762	-	559	-	610
750x550	762	-	610	-	610
800x750	813	-	762	-	610
800x700	813	820	711	720	610
800x650	813	-	660	-	610
800x600	813	820	610	630	610
850x800	864	-	813	-	610
850x750	864	-	862	-	610
850x700	864	-	711	-	610
850x650	864	-	660	-	610

Note:

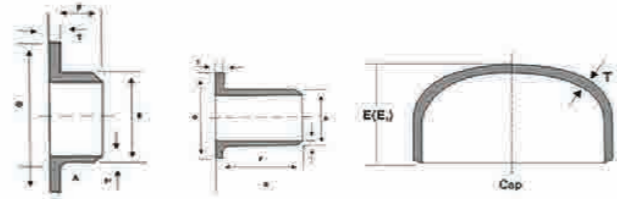
- Does not uses in the parenthesis as far as possible the value
- First selects A series

Con/Ecc. Reducers



Nominal Pipe Size	Outside Diameter At Bevel		Outside Diameter At Bevel		Center To End
	D1		D2		End to End L
	Series A	Series B	Series A	Series B	
DN	Series A	Series B	Series A	Series B	End to End L
900x850	914	-	864	-	610
900x800	914	920	813	820	610
900x750	914	-	762	-	610
900x700	914	920	711	720	610
950x900	965	-	914	-	610
950x850	965	-	864	-	610
950x800	965	-	813	-	610
950x750	966	-	762	-	610
1000x950	1016	-	965	-	610
1000x900	1016	1020	914	920	610
1000x850	1016	-	864	-	610
1000x800	1016	1020	813	820	610
1050x1000	1067	-	1016	-	610
1050x950	1067	-	965	-	610
1050x900	1067	-	914	-	610
1050x850	1067	-	864	-	610
1100x1050	1118	-	1067	-	610
1100x1000	1118	1120	1016	1020	610
1100x950	1118	-	965	-	610
1100x900	1118	1118	914	920	610
1150x1100	1168	-	1118	-	711
1150x1050	1168	-	1168	-	711
1150x1000	1168	-	1016	-	711
1150x950	1168	-	965	-	711
1200x1150	1220	-	1168	-	711
1200x1100	1220	1220	1168	1120	711
1200x1050	1220	-	1067	-	711
1200x1000	1220	1220	1067	1020	711

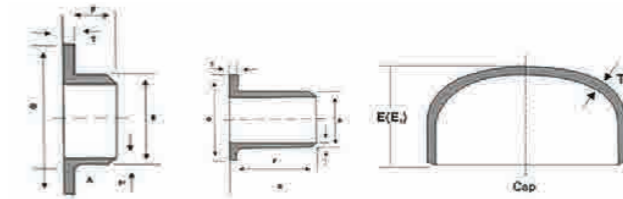
Caps



Nominal Pipe Size		Outside Diameter At Bevel				Center To End
		D1		D2		
DN	Inch	Series A	Series B	Series A	Series B	End to End L
15	0.5	21.3	18	25	-	-
20	0.75	26.9	25	25	-	-
25	1	33.7	32	38	-	-
32	1.1/4	42.6	38	38	-	-
40	1.1/2	48.3	35	38	-	-
50	2	60.3	57	38	44	55
60	2.1/2	76.1(73)	76	38	51	7
60	3	88.9	89	51	51	76
90	3.1/2	101.6	-	64	76	8.1
100	4	114.3	108	64	76	8.6
125	5	139.7(141.3)	133	76	89	9.5
150	6	168.3	159	89	102	11
200	8	219.1	219	102	127	12.7
250	10	273	273	127	152	12.7
300	12	323.9	325	152	178	12.7
350	14	355.6	377	165	191	12.7
400	16	406.4	426	178	203	12.7
450	18	457.2	476	203	229	12.7
500	20	508	529	229	254	12.7

1.DN600 hose cap, when wallthickness surpasses 13mm, its Evalue changes 305mm
 2.Does not use in the parenthesis as far as possible the value
 3.The hose cap span ic net bigger than when the limit thinkness is E, surpasses the limit thickness is E1

Caps



Nominal Pipe Size		Outside Diameter At Bevel		Length
DN	Inch	Series A	Series B	
550	22	559	-	254
600	24	610	630	267
650	246	660	-	267
700	28	711	720	267
750	30	762	-	267
800	32	813	820	267
850	34	864	-	267
900	36	914	920	267
950	38	965	-	305
1000	40	1016	1020	305
1050	42	1067	-	305
1100	44	1118	1120	345
1150	46	1168	-	345
1200	48	1220	1220	345



Flages



LAP JOINT FLANGE



BLIND FLANGE



SCRWED FLANGE



SLIP-ON FLANGE



WELDING NECK FLANGE



SOCKET-WELDING FLANGE

● STAINLESS STEEL FLANGES

Material: 304, 304L, 316, 316L.

Standard: JIS, DIN, ANSI, BS, EN.

Size: DN8 - DN2000.

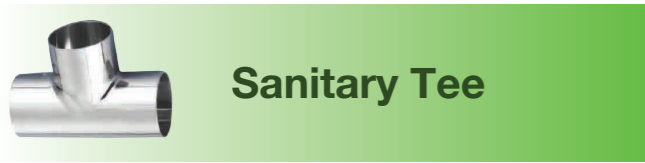
Type: Plate flange, Slip on flange, Welding neck flange, Blind flange...

Pressure: 5K, 10K, PN10, PN16, PN25, 150LB, 300LB...

Application: Petroleum, Gas, Oil, Chemical industry, Mechanical equipment, Food, Sugar industry, Electricity, Water treatment, Boiler, Heat exchanger.



Sanitary Fittings



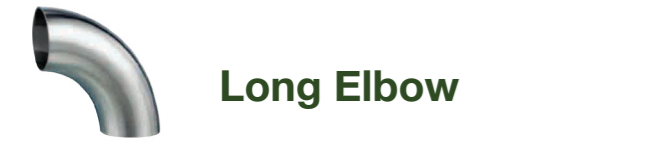
Sanitary Tee



Concentric Reducer



Eccentric Reducer



Long Elbow



Short Elbow



Sanitary Cross

● Sanitary Stainless Steel Pipes And Fittings

Name: Sanitary stainless steel pipes & fittings.

Application: Chemical industry, mechanical equipment, food and beverage industry.

Origin: ILTA INOX S.p.A, ASEAN / EU TAIWAN / VIET NAM / CHINA.

Material: 304, 304L, 316, 316L.

Standard: EN 10357 1.4404
DIN 11850, SMS, BS, ASME.

Outside Diameter (OD): 1/2 - 12 Inch (12.7MM~406.4MM).



BPEDT-4-1 (DT-1) Stainless Steel Tube

Nominal Size		Tube Wall Thickness		SF1	SF4
Inch	mm	Inch	mm	#=#F1	#=#F4
1/4	6.35	0.035	0.89	2201B014089-##	
3/8	9.53	0.035	0.89	2201B038089-##	
1/2	12.70	0.065	1.65	2201B050165-##	
3/4	19.05	0.065	1.65	2201B075165-##	
1	25.40	0.065	1.65	2201B100165-##	
1 1/2	38.10	0.065	1.65	2201B150165-##	
2	50.80	0.065	1.65	2201B200165-##	
2 1/2	63.50	0.065	1.65	2201B250165-##	
3	76.20	0.065	1.65	2201B300165-##	
4	101.60	0.083	2.11	2201B400211-##	
6	152.40	0.109	2.77	2201B600277-##	

ASTM A249/A269/A270 Stainless Steel Tube

Nominal Size		Tube Wall Thickness		X=ID	Y=OD
Inch	mm	Inch	mm	#=Material Grade	
1/2	12.70	0.065	1.65	2401#050165-XY	
3/4	19.05	0.065	1.65	2401#075165-XY	
1	25.40	0.065	1.65	2401#100165-XY	
1 1/2	38.10	0.065	1.65	2401#150165-XY	
2	50.80	0.065	1.65	2401#200165-XY	
2 1/2	63.50	0.065	1.65	2401#250165-XY	
3	76.20	0.065	1.65	2401#300165-XY	
4	101.60	0.083	2.11	2401#400211-XY	
6	152.40	0.109	2.77	2401#600277-XY	

SMS Stainless Steel Tube

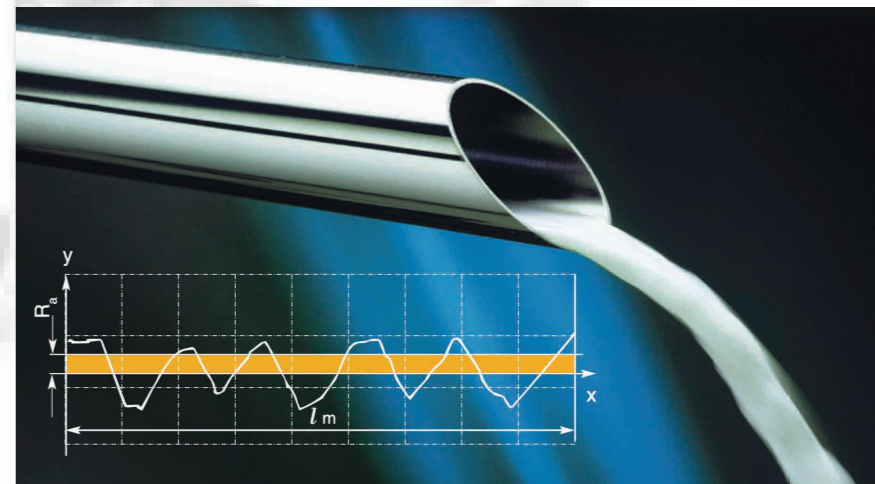
Nominal Size		Tube Wall Thickness		ID#320	OD#240
DN	mm	Inch	mm	#=Material Grade	
25	25.40	0.047	1.2	3101#100120-32	
25	25.40	0.047	1.5	3101#100150-32	
38	38.10	0.047	1.2	3101#150120-32	
38	38.10	0.047	1.5	3101#150150-32	
51	50.80	0.047	1.2	3101#200120-32	
51	50.80	0.047	1.5	3101#200150-32	
63.5	63.50	0.059	1.5	3101#250150-32	
76.1	76.20	0.063	1.6	3101#300165-32	
101.6	101.60	0.079	2.0	3101#400210-32	

● Material Grades:

- A = 304/304L
- B = 316/316L
- C = 1.4404
- D = 1.4435
- H = 904L
- I = Hastelloy® C-22®
- J = Hastelloy® C-276
- L = AL-6XN®
- E = EPDM
- S = Silicone/VMQ or SS Reinforced Teflon®
- T = PTFE/Teflon®
- N = NBR/Buna-N/Nitrile
- V = FKM/Viton®
- G = RTFE (Reinforced Teflon®)
- F = FRN (Fiberglass Reinforced Nylon)

● Surface Finishes:

- 0 = Unpolished / Mill finish
- 1 = 0.8 µm Ra Max./180 Grit
- 2 = 0.5 µm Ra Max./240 Grit
- 3 = 0.4 µm Ra Max./320 Grit
- 6 = Sandblasted
- 8 = Tumble Finish
- P = Pickling/Passivation
- BA = Bright Annealed



Stainless Steel Valves

Material: 304, 304L, 316, 316L.

Joint Style: Weld, Thread, Clamp, Weld/Thread, Flange.

Size: DN15 – DN500.

Type: Ball valve, Gate valve, Globe valve, Butterfly valve, Swing check valve...

Pressure: From 10 bar to 25 bar.

Application: Petroleum, Gas, Oil, Chemical industry, Mechanical equipment, Food, Sugar industry, Electricity, Water



Gate Valve Flange



Gate Valve Thread End



Globe Valve



Thread Ball Valve



Ball Valve



Butterfly Valve



Thread Ball Valve



Y Strainer



Y Type Strainer



Swing Check Valve



Swing Check Valve

Products

Manual Divert Valve



Pneumatic / Manual Diaphragm Valve / Tank Valve



Actuator for Butterfly Valve



Sight Glass



Control Box



Auto Control Divert Valve



Manual Ball Valve



Pneumatic / Position Control



Plug Cock Valve



Check Valve



**CSE Tank Valve
Pneumatic / Manual**



Products

- CSE Manual for Butterfly Valve



- OEM Pneumatic Manual Valve



- Clamp Unions / Seal/ Tubing Hanger



- Unions - 3A, DIN, SMS, RJT, BS, AS... / Seal



- Spray Ball / Tank Covers



- Pressure Gauge / Temperature / Filter



- Sample Valve



- Unions - 3A, DIN, SMS, RJT, BS, AS... / Seal



- Industrial Ball Valve

Products

Specialized Technology



Spectrum Analysis Machine



Manifold Tubing



Orbital Welding



Technical, Orbital Weld Services & Valve Units

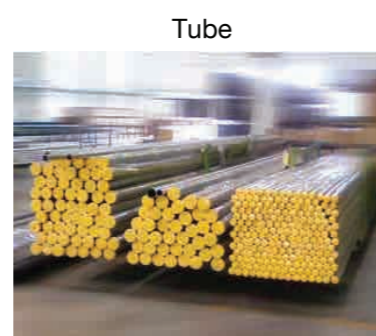
BPE Pharmaceutical / Biotechnology Tube



Hose Adapter / Flexibles Hose



Tube Fitting



Tube



SMS & DIN Fitting



Lost Wax Casting



BS, AS, RJT, CIP & IDF Fittings



CNC Machining Processing



Clamp & Ferrule



Roughness Test

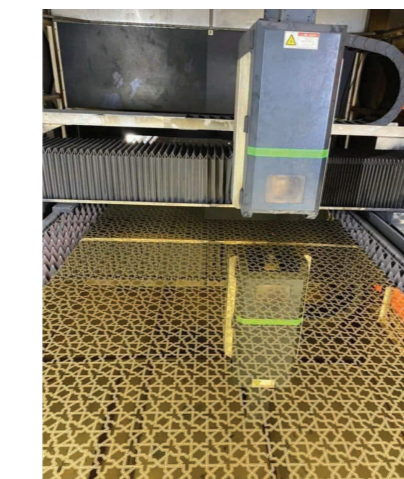
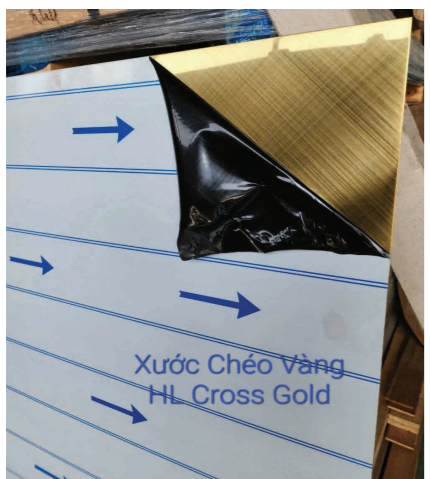
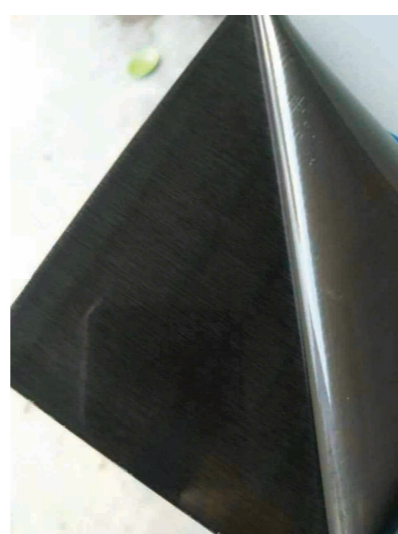
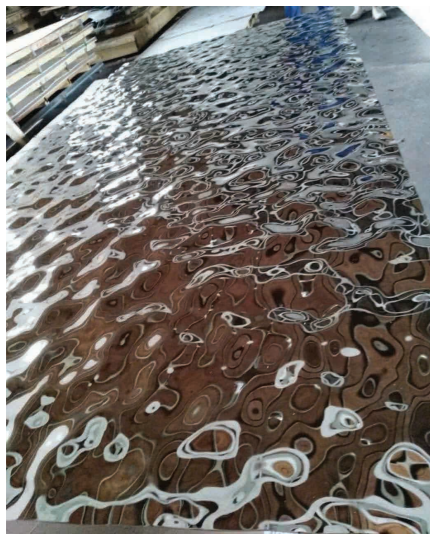
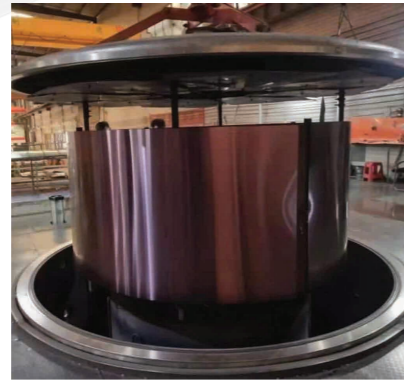
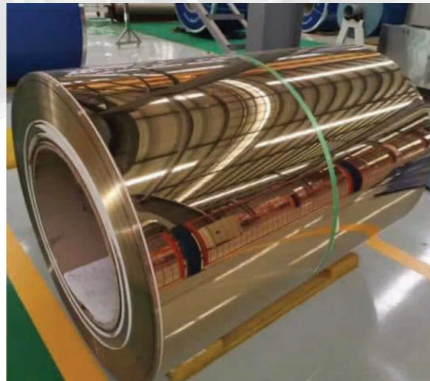


Fitting Stock



Forging Lines

Colored Stainless Steel Sheet



**We make your lives more colourful, better and confortablet
Simple but luxury,we enjoy sharing beauty in our way.Lighting up your ideas**

Product Name	Colored Stainless Steel Sheet
Grades	201, 202, 304, 316
Standard	ASTM, AISI, SUS, JIS, EN, DIN, BS, GB, etc.
Certifications	ISO, SGS, BV, CE or as required for India, Russia, Europe, America, Middle East, Saudi Arabia, Qatar, etc.
Thickness	0.3mm - 3.0mm
Width	1000 - 2000mm or Customizable
Length	2000 - 6000mm or Customizable
Surface	Gold mirror, Sapphire mirror, Rose mirror, Black mirror, Bronze mirror; Gold brushed, Sapphire brushed, Rose brushed, Black brushed, etc.
Delivery time	Normally 3 -7 days or negotiable
Package	Standard Seaworthy Wooden Pallets/Boxes or as per clients' requirements
Payment terms	T/T, 30% deposit should be paid in advance, the balance is payable at sight of the copy of B/L
Applications	Architectural decoration, luxury doors, elevators decorating, metal tank shell, ship building, decorated inside the train, as well as outdoor works, advertising nameplate, the ceiling and cabinets, aisle panels, screen, the tunnel project, hotels, guest houses, entertainment place, kitchen equipment, light industrial, and others.

● Titanium Alloy Product



● Titanium Chemical Composition

STMA/SME	GB	JIS	N.max	C.max	H.max	Fe.max	O.max	Others	Strength Of Extension (Mpa.min)	Ductility (% min)
Gr.1	TA1	Class1	0.03	0.08	15	0.2	0.18		240	24
Gr.2	TA2	Class2	0.03	0.08	15	0.3	0.25		345	20
Gr.3	TA3	Class3	0.03	0.08	15	0.3	0.35		450	18
Gr.4	TA4	Class4	0.05	0.08	15	0.5	0.4		550	15
Gr.5	TC4	Class5	0.05	0.08	15	0.4	0.2	Al:5.5-6.75V:3.5-4.5	895	10
Gr.7	TA9	Class12	0.03	0.08	15	0.3	0.25	Pd:0.12-0.25	345	20
Gr.9	TC2	Class2	0.03	0.08	15	0.25	0.15	Al:2.5-3.5V:2.0-3.0	620	12
Gr.11	TA9-1	Class11	0.03	0.08	15	0.3	0.25	Pd:0.12-0.25	240	24
Gr.23	TC4 ELI	Class5 E	0.03	0.08	0.0125	0.25	0.13	Al:5.5-6.5	828	10

Fasteners - Bolts

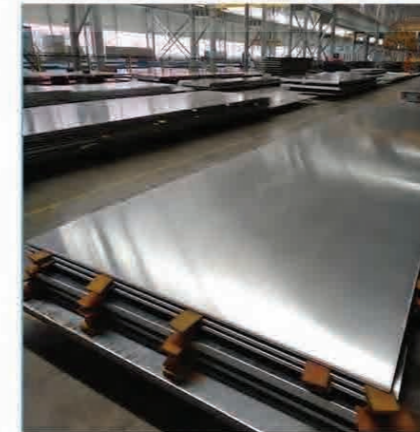


Fasteners - FlatWashers



Fasteners - Others





Titanium Alloy Plate



Titanium Alloy Pipe



Titanium Alloy Coil



Titanium Alloy Bar



Titanium Steel Wire



Titanium Alloy Flange

● Titanium Chemical Composition

STM/ASME	GB	JIS	ELEMENT CONTENT (wt%)						MECHANICAL PROPERTIES		
			N,max	C,max	H,max	Fe, max	O, max	other	Strength Of Extension	Ductility	
									Mpa,min	%min	
Pure Titanium	Gr.1	TA1	Class1	0.03	0.08	0.015	0.2	0.18		240	24
	Gr.2	TA2	Class2	0.03	0.08	0.015	0.3	0.25		345	20
	Gr.3	TA3	Class3	0.05	0.08	0.015	0.3	0.35		450	18
	Gr.4	TA4	Class4	0.05	0.08	0.015	0.5	0.4		550	15
Titanium Alloy	Gr.5	TC4	Class60	0.05	0.08	0.015	0.4	0.2		895	10
		Ti-6a1-4V									
	Gr.7	TA9	Class12	0.03	0.08	0.015	0.3	0.25		345	10
	Gr.9	TC2	Class1	0.03	0.08	0.015	0.25	0.15		620	15
	Gr.11	TA9-1	Class11	0.03		0.015	0.2	0.18		240	24
Gr.23	TC4 ELI	Class60 E	0.03	0.08	0.0125	0.25	0.13		828	10	



Titanium Alloy Elbow



Titanium Alloy Tee



Titanium Alloy Reducer

Titanium Alloy Product

● Inconel Chemical Composition

Inconel	Ni	Cr	Fe	Mo	Nb & Ta	Co	Mn	Cu	Al	Ti	Si	C	P	S	B
600	≥72.0	14.0-17.0	6.0-10.0			≤1.0	≤1.0		0.15	0.65-1.15	≤0.5	≤0.08	≤0.015	≤0.015	≤0.006
617	44.2-61.0	20.0-24.0	≤3.0	8.0-10.0		≤1.5	≤0.5	≤0.5			≤0.5	≤0.08	≤0.015	≤0.015	≤0.006
625	≥58.0	20.0-23.0	≤5.0	8.0-10.0	3.15-4.15	≤1.0	≤0.5	≤0.5			≤0.4	≤0.04	≤0.015	≤0.015	≤0.006
690	≥58.0	27-31	7-11			≤1.0	≤0.5	≤0.5			≤0.5	≤0.04	≤0.015	≤0.015	≤0.006
Nuclear grade 690	≥58.0	28-31	7-11			≤1.0	≤0.35	≤0.35			≤0.4	≤0.04	≤0.015	≤0.015	≤0.006
718	50.0-55	17.0-21.0	Balance	2.8-3.3	4.75-5.5	≤1.0	≤0.35	≤0.35		0.2-0.8	≤0.35	≤0.08	≤0.015	≤0.015	≤0.006
X-750	≥70.0	14.0-17.0	5.0-9.0	≤1.0	0.7-1.2	≤1.0	≤1.0	≤1.0	0.4-1.0	2.25-2.75	≤0.5	≤0.08	≤0.015	≤0.015	≤0.01

Monel

● Monel Chemical Composition

TRADE NAME	ASTM/AISI	%CU	UNS	%AL	%TI	%FE	%MN	%SI	%NI
	ALLOY TYPE								
Monel 400	B 127, B 164	N04400	28-34			2.5 max	2.0 max	0.5 max	63 min
Monel 401		N04401	28-34			2.5 max	2.0 max		63 min
Monel 404		N04404	Rem	0.05 max		0.5 max	0.1 max	0.1 max	52-57
Monel K-500	B 865	N05500	27-33	2.3-3.15	0.35-0.85	2.0 max	1.5 max	0.5 max	63 min
Monel 405	B 164	N04405	28-34			2.5 max	2.0 max	0.5 max	63 min

● Inconel Alloy Product



Inconel Alloy Plate



Inconel Alloy Pipe



Inconel Alloy Coil



Inconel Alloy Bar



Inconel Steel Wire



Inconel Alloy Flange

Stainless Steel Profile

Profiles - According to the section shape can be divided into I-steel, channel steel, Angle steel, etc., I-steel, channel steel, Angle steel is widely used in industrial buildings and metal structures, such as factory buildings, bridges, ships, agricultural machinery and vehicle manufacturing, transmission towers, transport machinery, often used together.

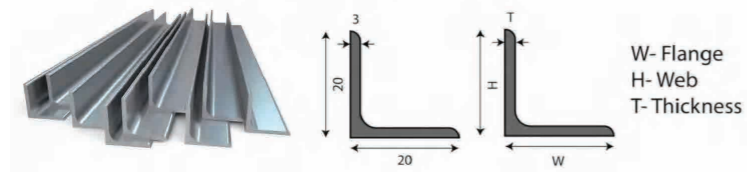
Steel Beam



Structural steel angles can be equal or unequal. Both will be right-angled, but the unequal one will have an L-shaped axis. The strength-to-weight ratio of this part is significantly better than average (by as much as 20%).

The dimensions of the different diameters of the uneven angle pieces range from 30 millimeters by 20 millimeters by 3 millimeters to 200 millimeters by 150 millimeters by 18 millimeters. The comparable weights per meter length are respectively 11 N and 469 N. The equal angle steel sections are available in sizes spanning from 20 mm x 20 mm x 3 mm to 200 mm x 200 mm x 25 mm. Both lengths have similar weights per meter at 9 N and 736 N.

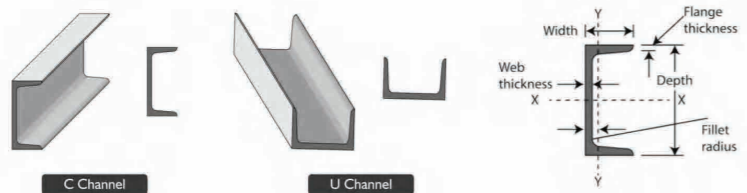
Steel Angle



Structural steel angles can be equal or unequal. Both will be right-angled, but the unequal one will have an L-shaped axis. The strength-to-weight ratio of this part is significantly better than average (by as much as 20%).

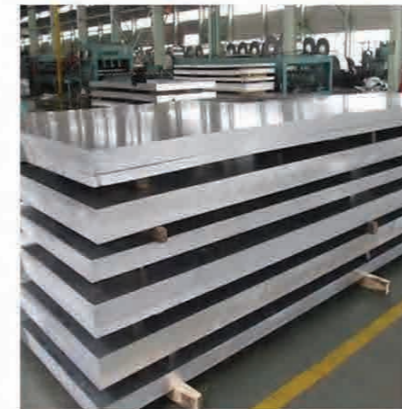
The dimensions of the different diameters of the uneven angle pieces range from 30 millimeters by 20 millimeters by 3 millimeters to 200 millimeters by 150 millimeters by 18 millimeters. The comparable weights per meter length are respectively 11 N and 469 N. The equal angle steel sections are available in sizes spanning from 20 mm x 20 mm x 3 mm to 200 mm x 200 mm x 25 mm. Both lengths have similar weights per meter at 9 N and 736 N.

Channel



Like a half beam, except that the web is full thickness, channel steel sections consist of a single web bordered by upper and lower flanges aligned at right angles to the web. Bar sizes typically come in lengths of up to 6 to 12 m, while structural sizes are offered in 18 m sections. While channels aren't used as beams, they facilitate fastening together with similar surfaces because of their flat faces.

Incoloy Alloy Product



Incoloy Alloy Plate



Incoloy Alloy Pipe



Incoloy Alloy Coil



Incoloy Alloy Bar



Incoloy Steel Wire



Incoloy Alloy Flange



Incoloy Alloy Elbow



Incoloy Alloy Tee



Incoloy Alloy Reducer

● Galvanized Steel Coil & Sheet

Hot Dipped Galvanized Steel Coil and alloying Galvanized Coil have excellent performance, possessing ideal comprehensive properties of corrosion resistance, formation and coating.

Galvanized steel (GI) are mainly used in building, automobiles, metallurgy, electric equipments and more. Building – roof, door, window, roller shutter door and suspended skeleton

Automobiles – vehicle shell, chassis, door, trunk lid, oil tank, and fender

Metallurgy – steel sash blank and color coated substrate

Electric equipments – refrigerator base and shell, freezer, and kitchen equipment

Phu Giang Nam, JSC adheres to strict quality standards to produce our galvanized steel coils/sheets. We guarantee our products meet our customer's requirement.

Packing Details

Standard Export Packing:

4 eye bands and 4 circumferential bands in steel

Galvanized metal fluted rings on inner and outer edges

Galvanized metal and waterproof paper wall protection disk

Galvanized metal and waterproof paper around circumference and bore protection

About the sea worthy packaging: extra reinforcement before shipment to ensure that the goods are safer and less damaged to customers.

Specifications

Specifications	Details
Thickness	0.13mm-4.0mm
Width	600mm-1500mm
Type of Coating	Hot Dipped Galvanized
Zinc Coating	30-275g/m ²
Surface Treatment	Passivation/skin pass/non-oiled/oiled
Surface Structure	Zero Spangle / Mini Spangle / Regular Spangle / Big Spangle
Coil Weight	3-10 metric ton per coil
Package	Standard export package or customized
Hardness	HRB50-71 (CQ Grade) HRB45-55 (DQ Grade)
Yield Strength	140-300 (DQ Grade)
Tensile Strength	270-500 (CQ Grade) 270-420 (DQ Grade)
Elongation Percentage	22 (CQ Grade thickness less 0.7mm) 24 (DQ Grade thickness less 0.7mm)



Carbon Steel Plate

"The main component of carbon steel plate is iron, containing a small amount of carbon, in order to improve its performance, usually add some alloying elements, such as silicon, manganese, phosphorus, and so on. Carbon steel is divided into low carbon steel, medium carbon steel, and high carbon steel according to carbon content. The carbon content of mild steel is 0.02% ~ 0.25%; The carbon content of medium carbon steel is 0.25% ~ 0.6%; The carbon content of high carbon steel is 0.6% ~ 2.14%.

Carbon steel plate has good mechanical properties, with high strength, hardness, and good toughness, at the same time, it also has excellent thermal properties, such as at high temperatures can still maintain high strength and hardness. In addition, the process performance of the carbon steel plate is also better, and it is easy to cut, bend and polish processing operations."

Carbon Steel Plate: A516, A537, Q345R, Q235, Q255, Q275, SS400, A36, SM400A, St37-2, SA283Gr, S235JR, S235JO, S235J2, etc.

Wearing Plate: NM360, NM400, NM450, NM500, NM550, NM600, HARDOX400, HARDOX450, HARDOX500, HARDOX600, EVERHARD C 400-450-500 KALMETALL W100, UP (UPX), etc.

Alloy Steel Plate: Q295, Q345, Q390, Q420, Q460, A572Gr50, A588GrB, SM490, St52-3, S275JR, S355JR, S355JO, S355J2, S355K2, S355NL, WH70Q, WQ590, Q550, WQ690, WQ700, A514, A517, S690Q, S690QL, S890Q, S960Q, WQ890, WQ960, WDB620

Manganese Plate: 10, 211, 022; 10, 301, 033; 10, 361, 040; 10, 431, 045; 10, 501, 052; 1566; 13, 201, 321, 1330, 1335, 1340, 1345, TS14835, 50B46H, 50B40, 50B44, 9255, 9260

Pressure Vessel Plate: SA515Gr60, SA515Gr70, SA516Gr60, SA516Gr70, P235GH, HII, P265GH, P295GH, P355GH, 19Mn6, P355NL1, 19Mn6, 15Mo3, 16Mo3, A537-C11, 09MnNiDR, SA662GrC, AISI4140, SA285Gr, SB410, 410B, KP42, Q245R, Q345R, 16MnDR, SPV355, Q370R, 18MnMoNbR, 15MnNiDR, A48CPr, SA515Gr65, SA516Gr65, SA612M, SA537CL2, 07MnNiMoVR, 07MnCrMoVR, 12MnNiVR, WDB620, Q500FC, 13MnNiMoR, 20MnMo, 20MnMoNi55, SA612, A/SA533, A/SA302, SA299, 13MnNiMo54(BHW35)(DIWA353)(NB450)

Thickness: 0.2-500mm, etc.

Width: 1000-4000mm, etc.

Length: 2000mm, 2438mm, 3000mm, 3500, 6000mm, 12000mm, or rolled, etc.

Standard: ASTM, AISI, JIS, GB, DIN, EN

Technique: Cold Rolled, Hot Rolled

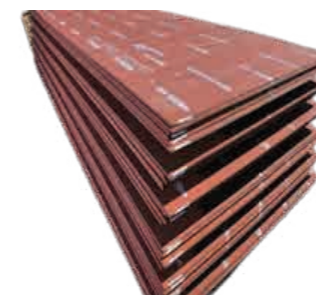
Certification: ISO, SGS, BV



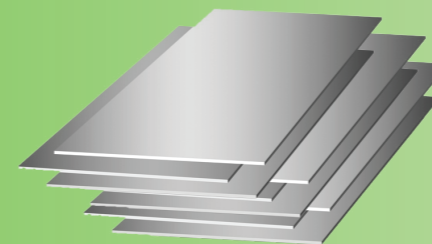
carbon steel plate



carbon steel coil



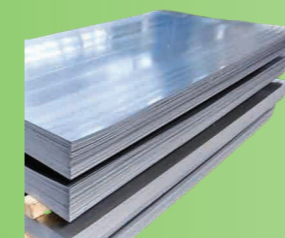
wearing plate



alloy steel plate



manganese plate



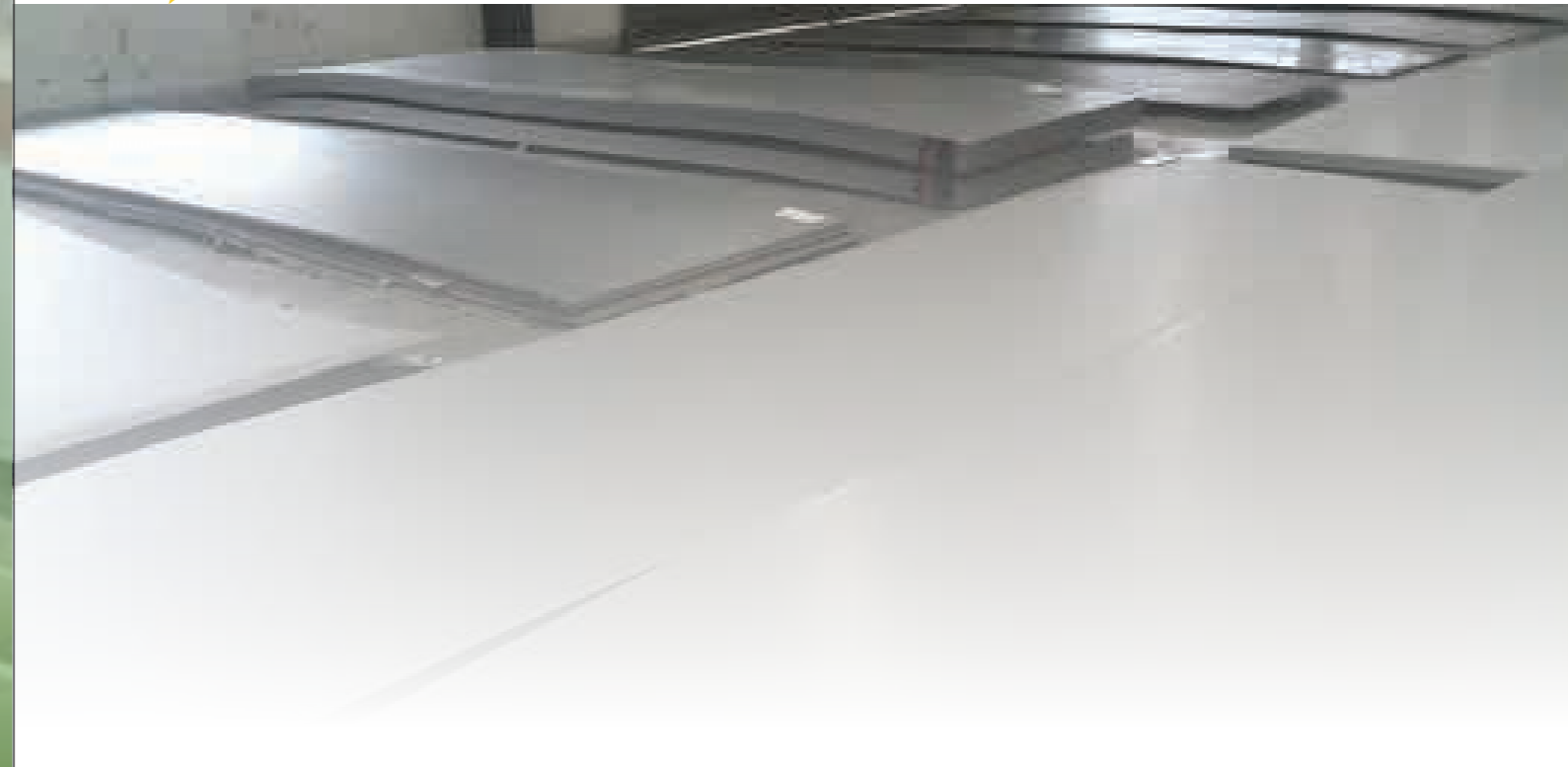
pressure vessel plate

Carbon Steel Pipe



Precision tube
Thickness: 1.5mm-30mm
Length: 3-12m, random or fixed, as the client's requests
Dimensions: 13.7mm-219.1mm
Technique: Hot Rolled Or Cold Rolled
Heat Treatment: Annealed; Quenched; Tempered
Tolerance: Control with in the standard, OD: +/-0.1mm, WT: +/-0.1mm

Carbon steel pipe/Square pipe/Seamless pipe/Welding pipe
Material: A36, A53, A106, A192, ST52, Q355, A210, T12, T11, P5, P9, P91, T22, A333, 4140, 5135 etc.
Grade (EN): 1.7220, 1.7336, 1.2601, 1.7380, 1.7335, 1.003, 1.0116 etc.
Outer Diameter: 17-914mm / 1/4"-36"
Wall Thickness: 1.25mm-50mm (SCH10/SCH20/SCH30/STD/SCH40/SCH60/XS/SCH80)
Length: 1-12m or as customer requirement
Ends: Black ends / Bevelled ends / Plain ends
Surface Treatment: Bare, Painting Black, Varnished, Galvanized, Anti-corrosion 3PE PP/EP/FBE coating etc.
Process: Cold Drawn Tube / Hot Rolled Tube
Testing Methods: Pressure test, Flaw detection, Eddy current testing, Hydrostatic testing or Ultrasonic examination and also with chemical and physical property inspection
Types: Hydraulic pipe, Boiler Tube, Fluid Pipe, Fire Pipe, Line Pipe, Structure Tube
Application: Water underground / Sewage / Treatment Steel scaffolding / Transporting oil & gas / Boiler and condenser tubes / High-pressure applications / Chemical processing
Third Party Inspection: SGS / BV / MTC etc.



Incoloy

● Incoloy Chemical Composition

Incoloy	Fe	Cr	Al	Ti	C	Y	Cu	Mn	Co	Ni	P	Si	S	Mo	Nb
20	35	19-21	0	0	0	0	3-4	<2	0	32-38	0	<1	0	2-3	0
28	29-40.4	26-28	0	0	0	0	<2.5	0	0	30-34	0	0	0	3-4	0
803	29.435-42.64	25-29	0	0	0	0	<1.5	0	0	32-37	0	<1	0	0	0
945	balance	19.5-23	0.01-0.7	0.5-2.5	0.005-0.04	0	1.5-3	1	0	45-55	0.03	0.5	0.03	3-4	2.5-4.5
945X	balance	19.5-23	0.01-0.7	0.5-2.5	0.005-0.04	0	1.5-3	1	0	45-55	0.03	0.5	0.03	3-4	2.5-4.5
330	Fe 43	17-20	0	0	0	0	<2	0	0	34-37	0	*	0	0	0
825	Fe >22, ~33	19.5-23.5	<0.2	0.6-1.2	<0.05	0	1.5-3.0	<1.0	0	38-46	0	<0.5	<0.03	2.5-3.5	0
907	Fe 42	0	0	0.03	1.5	0	0	13	0	38	0	0.15	0	0	4.7
908	35.588-44.6	3.75-4.5	0.75-1.25	1.2-1.3	<0.03	0	<0.5	<1	<0.5	47-51	<0.015	<0.5	<0.005	0	2.7-3.3
800	Fe >39.5	19-23	0	0	0	0	<1.5%	0	0	30-35	0	0	0	0	0
20	Fe (-40%)	20	n/p	n/p	<0.07	n/p	3.5	<2.0	n/p	35	<0.045	<1.0	<0.035	2.5	about 1
DS	Fe (-40%)	18	n/p	0.2	0.1	nil	0.5	0.8-1.5	18 (Co+Ni 38)	18 (Co+Ni 38)	n/p	2.3	0.03		
MA956	Fe (-75%)	20	4.75	0.4	<0.1	0.5	<0.15	<0.3	<0.3	<0.5	<0.02	n/p	n/p		

● **Hastelloy**



● **Hastelloy Chemical Composition**

Alloy Type	Cr%	C%	Co%	W%	Mo%	V%	Al%	Ti%	Nb%	Fe%	Cu%	Ni%	Other %
Hastelloy Alloy B	0.6	0.1	1.25	-	28	0.3	-	-	-	5.5	-	rest/bal	Mn 0.80; Si 0.70
Alloy B2	1	0.02	1	-	26.0-30.0	-	-	-	-	2	-	rest/bal	Mn 1.0; Si 0.10
Alloy C276	14.0-16.5	0.02	2.5	3.0-4.5	15.0-17.0	0.35	-	-	-	4.0-7.0	-	rest/bal	Mn 1.0; Si 0.05
Alloy X	22	0.1	1.5	0.6	9	-	-	18.5	-	-	-	rest/bal	Mn 0.6; Si 0.60
Alloy C	16	0.07	1.25	40	17	0.3	-	-	-	5.75	-	rest/bal	Mn 1.0; Si 0.70
Alloy C4	14.0-18.0	15	2	-	14.0-17.0	-	-	0.70	-	3	-	rest/bal	Mn 1.0; Si 0.08
Alloy N	7	0.06	0.25	0.2	16.5	-	-	-	-	3	-	rest/bal	Mn 0.40; Si 0.25; B 0.01
Alloy S	15.5	0.02	2	1	14.5	0.6	0.2	-	-	3	-	rest/bal	Mn 0.50; Si 0.40; B0.0009; La 0.02
Alloy F	22	0.02	1.25	0.5	6.5	-	-	2.1	21	21	-	rest/bal	Mn 1.50; Si 0.50
Alloy G	21.0-23.5	0.05	2.5	1	5.5-7.5	-	-	1.7-2.5	18.0-21.0	-	-	rest/bal	Mn 1.0-2.0; P0.04; Si 1.0;
Alloy G2	23.0-26.0	0.03	-	-	5.0-7.0	-	-	0.70-1.50	-	rest/bal	rest/bal	47.0-52.0	Mn 1.0; Si 1.0
Alloy W	5	0.06	1.25	-	24.5	-	-	-	-	5.5	-	rest/bal	Mn 0.050; Si 0.50

Hastelloy Alloy Product



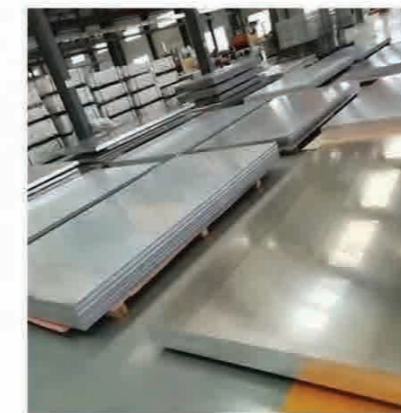
Hastelloy Alloy Bar



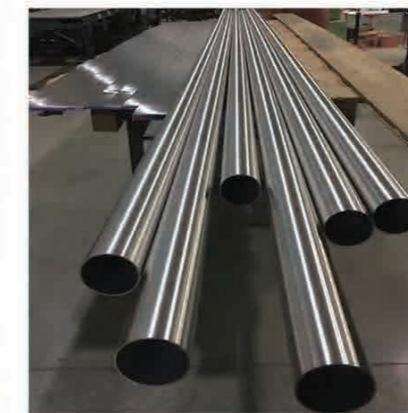
Hastelloy Steel Wire



Hastelloy Alloy Flange



Hastelloy Alloy Plate



Hastelloy Alloy Pipe



Hastelloy Alloy Coil



Hastelloy Alloy Elbow



Hastelloy Alloy Tee



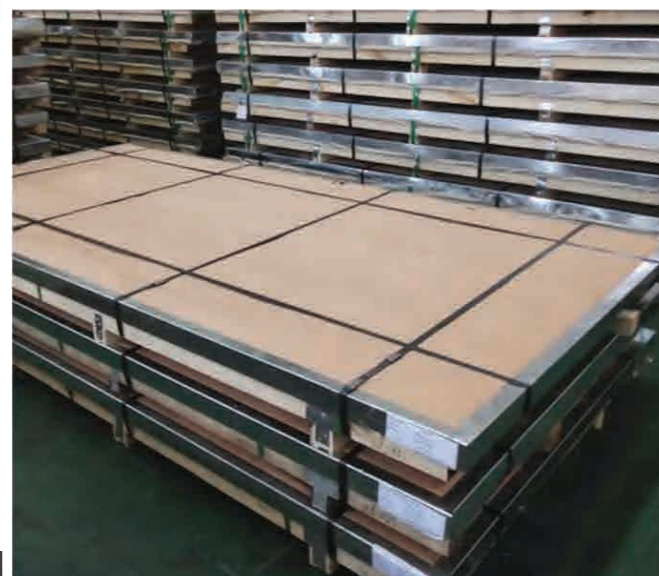
Hastelloy Alloy Reducer



● Packaging and Transportation

packing details

Strong and high pallets to avoid damage by forklift;
 Inner plastic film to prevent water;
 Outer carton or plywood to prevent scratch;
 More steel or woven straps to ensure the stability of package;
 Fortified angle bead.



Carbon Steel Profile

Thickness: 0.1mm-400mm

Length: 1m-12m

Standard: AISI, ASTM, GB, BS, EN, JIS, DIN etc

Delivery Conditions: Rolling, Annealing, Quenching Tempering Or Standard

Production Process: Hot Rolled / Cold Rolled

Carbon Structural Steel Channel

Structural carbon steel channel refers to the shape; a squared-off C. Types of channel include C Purlin which has a straight back with sides that have an inner-facing lip. Unistrut channel has holes or perforations to allow for bolting. Some channel has a slight ridge on the back for more rigidity.

Channel is primarily used as a stud, replacing wood in steel structures. The benefits of structural steel channel over wood studs are greater weight-bearing capacity and improved rigidity without increasing weight.

Carbon Structural Steel Beam

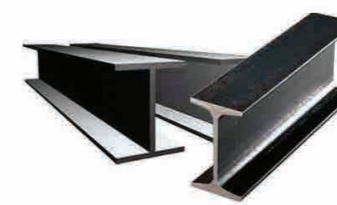
Structural Steel Beams come in I-Beam, W-Beam, and H-Beam. All are designed to span an area for support in construction. The shape of a beam affects the overall strength and weight. W or Wide Flange Beams have a broad flange on either side of the web. They are the most common due to their proven ability to withstand shear loads and bending.

Carbon Structural Steel Angles

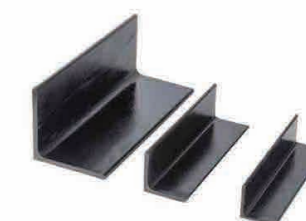
Carbon steel angle is hot rolled steel or high strength low alloy steel bars shaped to a 90 degree 'L' shaped bar. The sides or legs of the "L" may be equal or unequal. Other names for carbon steel angle are angle irons or steel angle bars.



carbon steel channel



carbon steel beam



carbon steel angles

PPGI & PPGL Steel Coil

PPGI is pre-painted galvanized steel, also known as pre-coated steel, color coated steel etc.

Using Hot Dip Galvanized Steel Coil as the substrate, PPGI is made by first going through surface pretreatment, then the coating of one or more layers of liquid coating by roll coating, and finally baking and cooling. The coatings used including polyester, silicon modified polyester, high-durability, corrosion-resistance and formability.

Our PPGI (Prepainted Galvanized Steel) & PPGL (Prepainted Galvalume Steel) are available in a variety of specifications. We could also provide the product life length lasts for decades as customers required.



PPGI Steel Coil - Specifications

Specification	Details
Product Name	PPGI, Prepainted Galvanized Steel Coil
Technical Standard	ASTM DIN GB JIS3312
Grade	SGCC SGCD or customer's requirement
Type	Commercial Quality/DQ
Thickness	0.13-2.0mm
Width	600-1500mm
Zinc Coating	40-275 g/m ² ding to Customers Reque/Sample
Color	All RAL Colors, or Accding to Customers Require/Sample
Top Side	Primer paint + polyester paint coating
Back Side	Primer epoxy
CoilWeight	3-8 tons per coil
Package	Standard export package or customized
Hardness	>=F
T Bend	>=3T
Reverse Impact	>=9J
Salt Spray Resistance	>=500 hours

● Common RAL Colors

You can choose the customized color you want and produce according to the RAL color. Here are some of the colors that our customers would normally choose:



Corrugated Steel Sheet

Corrugated Steel Sheet are widely used in:

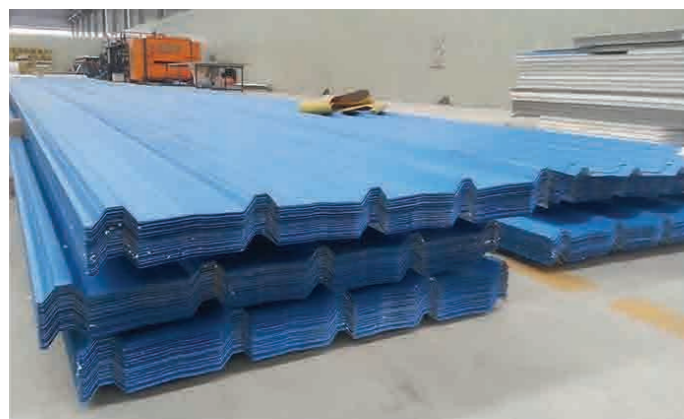
Construction: prefabricated house, steel house, mobile house, modular house, villa, bungalow design, portable house, ready-made house, kiosk booths, steel building...

Container manufacturing

Household appliances and furniture

Vehicle and vessel manufacturing

Others, like machinery structure parts, manufacturing shells of motors...



Specification

Material: Galvanized Steel Sheet, Galvalume Steel Sheet, PPGI/PPGL Sheet

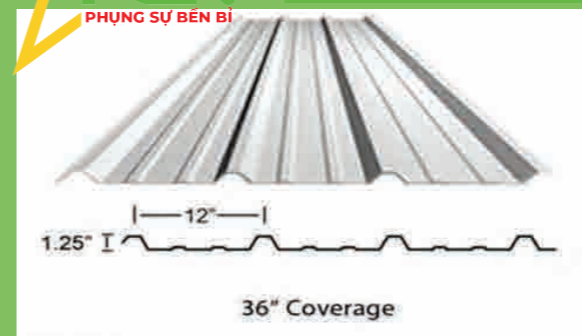
Model No.: Types of roof sheets

Thickness: Normal use 0.15-0.8mm

Length: Any length, according to the transportation, generally less than 6m

Standard Color: Red, Blue, White, Grey

Special Color: According to RAL color



- **PBR**
Galvalume: 26 gauge
36" panel coverage, 1-1/4" rib height
Exposed fastener panel
Trapezoidal rib on 12" centers
Applies over open framing or solid substrate
1:12 slope minimum



- **B DECK**
Galvanized: 16 to 22 gauge
1-1/2" rib height, 6" on center
Common uses include roof canopies, enclosures, canopies, B deck, wall cladding, structural decks
Structural type panel



- **7/8" CORRUGATED**
Cold Rolled: 24 & 26 gauge available in 37" coverage
Galvanized: 20 & 22 gauge available in 33" & 37" coverage
Galvalume: 26 gauge at 36" coverage
Exposed fastener panel
Applies over open framing or solid substrate
3:12 slope minimum



- **AG PANEL**
Galvalume: 29 gauge
White & Forest Green: 29 gauge
36" panel coverage, 3/4" rib height
Exposed fastener low-profile panel
Bell top rib on 9" centers
Applies over solid substrate
3:12 slope minimum



- **1/2" CORRUGATED**
Cold Rolled: 24 gauge
Galvanized: 24, 29 gauge
24" panel coverage, 1/2" rib height
Exposed fastener panel
Applies over open framing or solid substrate
3:12 slope minimum



- **7.2L PANEL**
Galvalume: 26 gauge
7.2" rib height, 36" wide
Ribs spaced 7.2" on center
36" wide coverage
Exposed fastener panel
Applies over open framing or solid substrate
Structural type panel
3:12 minimum slope

● Galvalume Steel Coil & Sheet

Similar to galvanized steel, Galvalume is produced by a hot-dip process. Instead of 100% zinc, the dip is 55% aluminum, 43.5% zinc and 1.5% silicon. Galvalume Steel Coil have excellent performance, possessing ideal comprehensive properties of corrosion resistance, formation and coating.

Galvalume Steel(also called Aluzinc Steel) are mainly used in building,automobiles,-metallurgy, electric equipments and more:

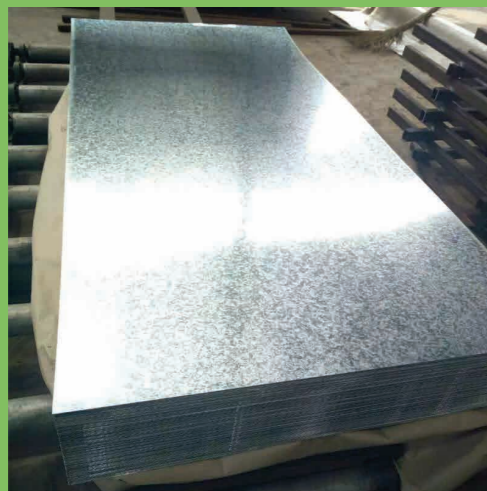
Building – roof, door, window, roller shutter door and suspended skeleton

Automobiles – vehicle shell, chassis, door, trunk lid, oil tank, and fender

Metallurgy – steel sash blank and color coated substrate

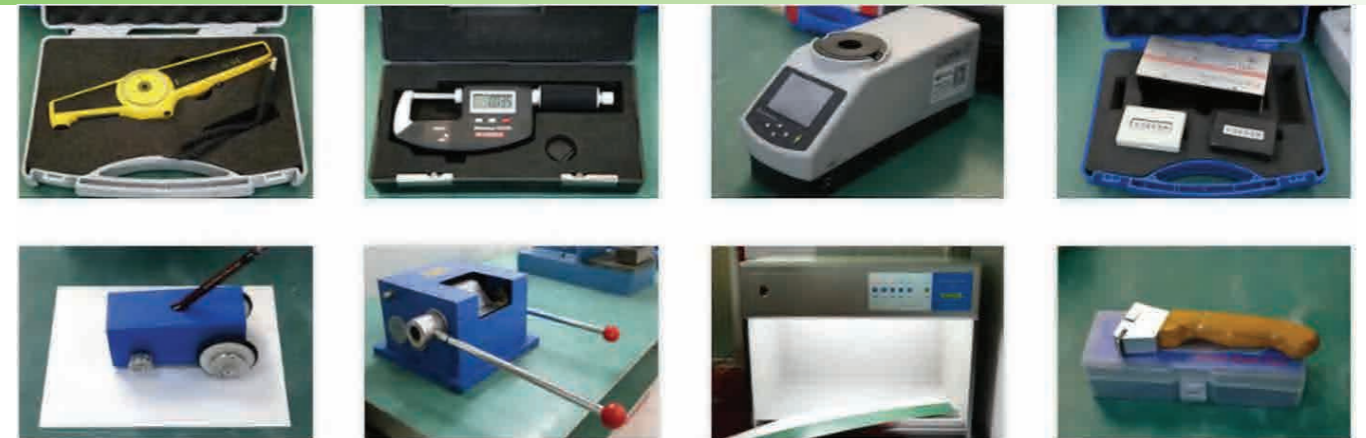
Electric equipments – refrigerator base and shell, freezer, and kitchen equipment

Phu Giang Nam. JSC adheres to strict quality standards to produce our galvanized steel coils/sheets. We guarantee our products meet our customer's requirement.



Quality Control

We have our own Physical & Chemical Testing Center Lab, to guarantee our product quality. Our test items & instrument fully meet international standards.



Specifications

Specification	Details
Thickness	0.13mm-4.0mm
Width	600mm-1500mm
Type of Coating	Hot Dipped Galvanized
Zinc Coating	30-275g/m ²
Surface Treatment	Passivation/skin pass/non-oiled/oiled
Surface Structure	Zero Spangle / Mini Spangle / Regular Spangle / Big Spangle
Coil Weight	3-10 metric ton per coil
Package	Standard export package or customized
Hardness	HRB50-71 (CQ Grade), HRB45-55 (DQ Grade)
Yield Strength	140-300 (DQ Grade)
Tensile Strength	270-500 (CQ Grade), 270-420 (DQ Grade)
Elongation Percentage	22 (CQ Grade thickness less 0.7mm), 24 (DQ Grade thickness less 0.7mm)

Carbon Steel Bar

Carbon steel bar is one of the most commonly used manufacturing and construction materials in the world due to its strength, adaptability, and affordability. Metal bar products provide sophisticated structure and support for a wide range of construction, architectural, and heavy industrial applications around the world, thanks to the many various forms and sizes of steel bar that may be created.

Steel bar is available from Phu Giang Nam, JSC in a range of forms and profiles, making it simple to select the correct fit for your project. Our inventory consists of the following items:



carbon steel round bar



carbon steel square steel



carbon steel flat steel



wire rod



steel rebar



carbon steel hexagonal steel

Carbon Steel Bars Specifications

Category	Details
Material	A53, A283, A106-A, A179, A214-C, A192, A226, A315, A106, A178 Q195, Q235, Q275, 10#, 15#20# 20GSTPG38, STS38, STB, 30, STS42, STB42STB35 SS400ST33, ST37, ST35.8, ST42, ST45-8, ST52
Dimensions	EN, DIN, JIS, ASTM, BS, ASME, AISI
Round Bars	3.0 – 50.8 mm, Over 50.8 – 300 mm
Carbon Steel Rectangular Bars	6.35 x 12.7 mm, 6.35 x 25.4 mm, 12.7 x 25.4 mm
CS Hex Bars	AF 5.8 mm – 17 mm
Carbon Steel Rectangular Bars	AF 2 mm – 14 mm, AF 6.35 mm, 9.5 mm, 12.7 mm, 15.98 mm, 19.0 mm, 25.4 mm
CS Flat Bars	1/2" to 10" in thickness range of 2 mm to 150 mm
Finish	Bright, Polish & Black
Length	1 to 6 Meters, Custom Cut Lengths
Form	Round, Square, Hex (A/F), Rectangle, Billet, Ingot, Forging Etc.

Carbon steel bars have a wide range of applications in various industries due to their strength, hardness, and durability. Some common applications of carbon steel bars include:

Construction: Carbon steel bars are used in construction for reinforcing concrete and other building materials.

Manufacturing: Carbon steel bars are used in the manufacturing of various products such as machinery, tools, and equipment.

Automotive industry: Carbon steel bars are used in the manufacturing of automobile components such as axles, crankshafts, and gears.

Oil and gas industry: Carbon steel bars are used in the oil and gas industry for drilling and extraction equipment.

Aerospace industry: Carbon steel bars are used in the aerospace industry for manufacturing components such as aircraft frames and landing gear.

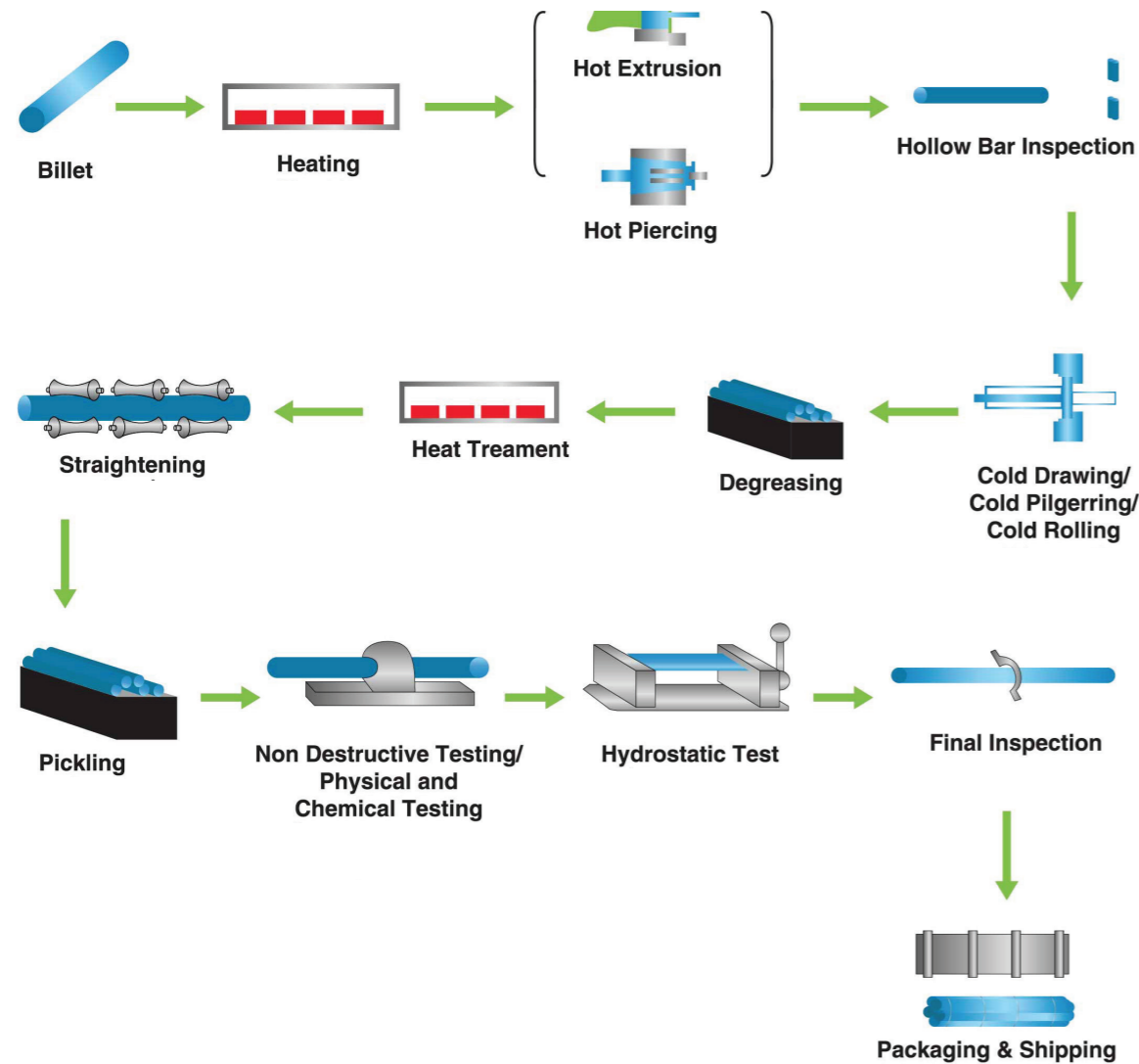
Agriculture: Carbon steel bars are used in the agricultural industry for manufacturing equipment such as plows and cultivators.

Shipbuilding: Carbon steel bars are used in the shipbuilding industry for manufacturing components such as propeller shafts and rudders.

Infrastructure: Carbon steel bars are used in the construction of infrastructure such as bridges, tunnels, and highways.

Certification

Manufacturing process for Stainless Steel Seamless Pipes



Annex to Certificate No. : 01 202 TWN/Q-09 0188



Scope according to	<input checked="" type="checkbox"/> Directive 2014/68/EU Annex I §4.3	<input type="checkbox"/> EN 764-4	<input type="checkbox"/> AD 2000-Merkblatt W0	<input type="checkbox"/> Regulation (EU) No. 305/2011(System 2+)						
Manufacturer		Work		Nationality	Date	Page No..	Remarks			
Company Name: Son Ha SSP Vietnam Sole Member Co., Ltd. Location: Lot CN1, Tu Liem Industrial Zone, Minh Khai Commune, Bac Tu Liem Dist., Hanoi, Vietnam		Lot A1, Phung Industrial Zone, Dan Phung Dist, Hanoi, Vietnam		Vietnam	2021.09.09	1	TÜV Rheinland Industrie Service GmbH			
Cur	Materials-term Materials-No.	Material Specification	Delivery Cond.	Article Type of Product	Dimensions		Weight max	Technical Specifications	Requirements Technical Regulations	
					Thick-ness mm	Ø mm	1=t / 2=kg	Res ult		
1	2	3	4	5	from 6a Up to 6b	from 7a Up to 7b	8a 8b			9
1. Materials according to harmonized European standards (hEN) and European Approval for Materials (EAM) acc. Directive 2014/68/EU The use of the materials according to Directive 2014/68/EU is bound to the publication of Harmonized European Standards or to the qualification by a European material approval or to the particular material appraisal. With that the manufacturing reliability for equivalent material grades according to other standards (e.g. BS, AFNOR, ASME) is proved. The requirements and limits of the applicable code respectively the PED must be observed for the use of material grades listed in column 2 to 4.										
1	1.4301, 1.4307, 1.4401, 1.4404	EN 10217-7	+AT	Welded tubes	1.65	8.18	3	204	EN 10217-7	
Remarks +AT = solution annealed +AR = as rolled +M = thermo mechanical treated +N = normalized or normalizing formed +NT = normalized and tempered +QT = quenched and tempered +S = soft annealed +SR = stress relieved a = PMA for the use in pressure equipment in Directive 2014/68/EU necessary										

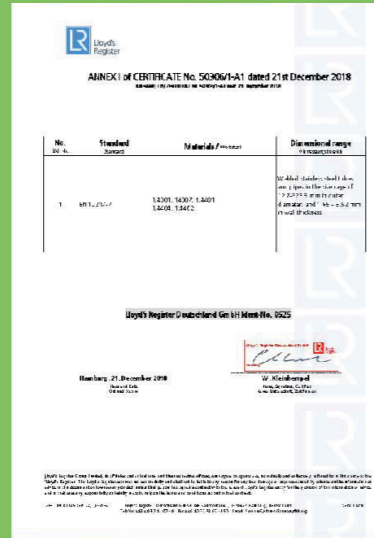
Annex to Certificate No. : 01 202 TWN/Q-09 0188



Scope according to	<input checked="" type="checkbox"/> Directive 2014/68/EU Annex I §4.3	<input type="checkbox"/> EN 764-4	<input type="checkbox"/> AD 2000-Merkblatt W0	<input type="checkbox"/> Regulation (EU) No. 305/2011(System 2+)						
Manufacturer		Work		Nationality	Date	Page No..	Remarks			
Company Name: Son Ha SSP Vietnam Sole Member Co., Ltd. Location: Lot CN1, Tu Liem Industrial Zone, Minh Khai Commune, Bac Tu Liem Dist., Hanoi, Vietnam		Lot A1, Phung Industrial Zone, Dan Phung Dist, Hanoi, Vietnam		Vietnam	2021.09.09	2	TÜV Rheinland Industrie Service GmbH			
Cur	Materials-term Materials-No.	Material Specification	Delivery Cond.	Article Type of Product	Dimensions		Weight max	Technical Specifications	Requirements Technical Regulations	
					Thick-ness mm	Ø mm	1=t / 2=kg	Res ult		
1	2	3	4	5	from 6a Up to 6b	from 7a Up to 7b	8a 8b			9
3. Materials according to international standards (e. g. ASTM, ASME, IBR etc.) The use of the materials according to DGR 2014/68/EU is bound to the publication of Harmonized European Standards or to the qualification by a European material approval or to the particular material appraisal. With that the manufacturing reliability for equivalent material grades according to other standards (e.g. BS, AFNOR, ASME) is proved. The requirements and limits of the applicable code respectively the PED must be observed for the use of material grades listed in column 2 to 4.										
2	TP304, TP304L, TP316, TP316L	ASTM A312	+AT	Welded pipes	1.65	8.18	3	204	ASTM A312	a
3	SUS304TP, SUS304LTP, SUS316TP, SUS316LTP	JIS G 3459	+AT	Welded pipes	1.65	8.18	3	204	JIS G 3459	a
Results +AT = solution annealed +AR = as rolled +M = thermo mechanical treated +N = normalized or normalizing formed +NT = normalized and tempered +QT = quenched and tempered +S = soft annealed +SR = stress relieved a = PMA for the use in pressure equipment in Directive 2014/68/EU necessary										



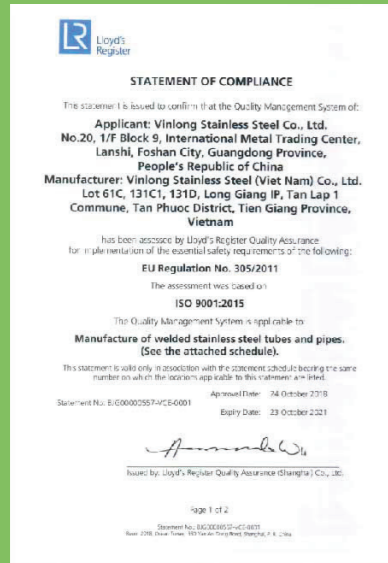
AD 2000



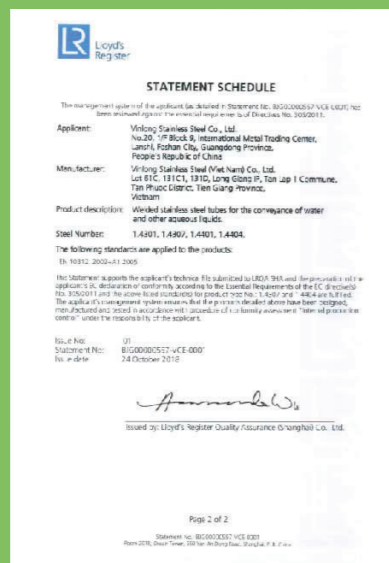
AD 2000



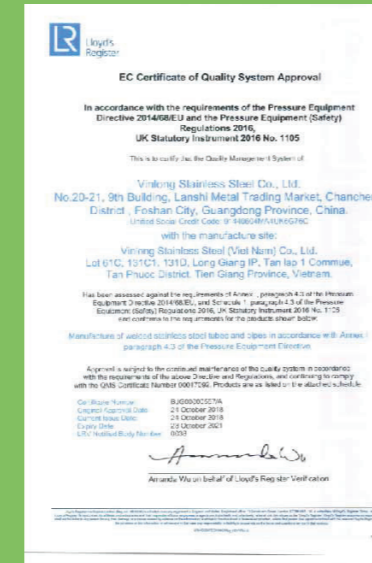
ASME.ASTM



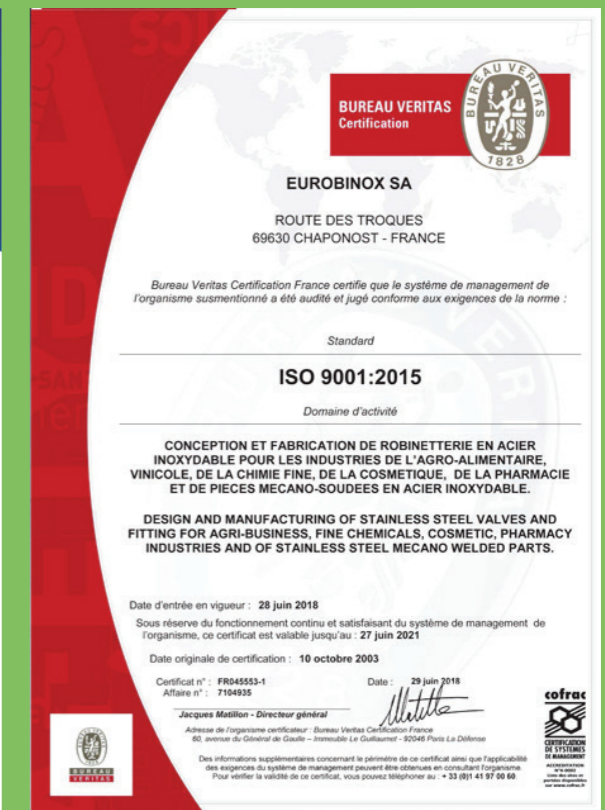
EN 10312 CERTIFICATE



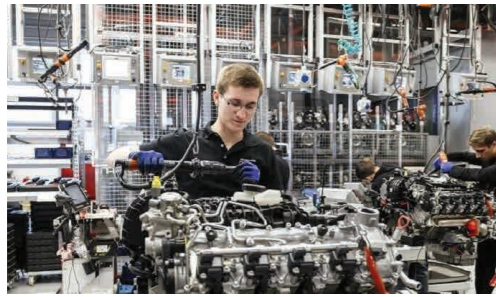
EN 10312 CERTIFICATE



PED 2014.68.EU



Application



Construction



Waste Water Treatment System



Industry



Boil Exchange



Mechanical Industry



Beverage Industry



Oil & Gas



Irrigation

Packing And Stocking



Project



Hayat Project – Binh Phuoc



Vinhomes Grand Park project – district 9 – Ho Chi Minh City



Landmark Project 81 – Ho Chi Minh City



Project – Chang Beer Cambodia



BVVT Lung Hospital



Install stainless steel pipes for Vinhomes Bason

Service

SEA AID SERVICES

Our experts at Phugiangnam can provide tailor-made sea-air solutions that will meet your specific requirements. By combining lower costs of ocean freight with the speed of airfreight we bring flexibility to your supply chain. Our sea-air service model can get your cargo to its destination at a very competitive price and on time. Our partnerships with reliable sea and air carriers offer seamless shipping from origin to destination under a single document.



AIR TRANSPORTATION SERVICES

With our network of agents overseas, Phugiangnam, provides import and export air freight services to destinations worldwide. To meet all your air freight requirements we have agreements with major air freight carriers. With our expertise and capacity, we use reliable carriers to ensure timely delivery of cargo.



Our air freight services are best among the world. For any type of cargo hazardous, perishables, bulk or loose we have a solution for you.

FIX

We offer below warehousing services.



ROAD TRANSPORTATION

We provide sea/land trans-shipment services, where cargo is forwarded to Dubai by sea and re-forwarded by road to any destination in the Middle East Countries at very competitive rates.



Our Land Transportation is handled by a team of professionals with many years of experience in the industry.

SEA TRANSPORTATION SERVICES

Phugiangnam, offers complete range of sea freight services for all types of cargo. We are uniquely positioned to offer flexible carrier choices at very competitive rates through our relationships with major carriers.



CUSTOMS PROCEDURES

Can handle customs clearance for all shipments. Our experienced staff has expertise in local conditions, country customs regulations, tariff updates, and more. With this knowledge, we can process your clearances smoothly and efficiently.



SPECIAL RENTAL SERVICES

Phu giang Nam Cargo provides Ad Hoc Service worldwide with an attractive price based on customer requirements



Our Strength

Set stainless steel, steel production, sales, research and development and service as one of the steel company.

Rich industry experience

Since the company put on the market, with its scientific and practical design, good quality and durable, reasonable price, timely and thoughtful after-sales service, and by users trust and praise.

Variety of products

The company's main types of stainless steel pipe, stainless steel plate, stainless steel bar...Set stainless steel production, sales and research and development as one.

Quality commitment

To provide customers with products and services at any time, fully understand customer requirements, due diligence, no exception, do the best, sustainable development.

Product customization

The company has built an experienced salesman, procurement team. No matter how many types of stainless steel, steel you are looking for, we can offer you with top-class products and excellent services at low costs.

Strict management

Through continuous development, the company has established a modern management system to ensure long-term and stable development.

Trusted by customers

The company can also provide on-site stainless steel, steel inspection and acceptance. We consistently receive recognition from our clients as a result of our exceptional technology and considerate services.

Strict Quality Control

● *Production process*

Our company introduces new industrial automation equipment, and gradually optimize every aspect of the production process.

● *Quality*

Quality is the life, our company is confident in the superior quality of products as the most professional stainless steel, steel manufacturer.

● *Equipment*

Our company is home to advanced quality testing equipment to control all steel equipment.

● *Innovation*

Our company has advanced production management and R & D technology and also continue to implement technical innovations.

● *Testing*

Our company has its own full set of testing methods and testing standards, and has first-class testing technology.

"CUSTOMER SATISFACTION IS OUR BIGGEST DRIVING FORCE"